

## Product datasheet for **TA302884**

### **NIPP1 (PPP1R8) Goat Polyclonal Antibody**

#### **Product data:**

<b>Product Type:</b>	Primary Antibodies
<b>Applications:</b>	WB
<b>Recommended Dilution:</b>	ELISA: 1:32,000. WB: 1-2µg/ml.
<b>Reactivity:</b>	Human (Expected from sequence similarity: Mouse, Rat, Dog, Cow)
<b>Host:</b>	Goat
<b>Isotype:</b>	IgG
<b>Clonality:</b>	Polyclonal
<b>Immunogen:</b>	Peptide with sequence C-EAWPGKKPTPSLLI, from the C Terminus of the protein sequence according to NP_002704; NP_054829; NP_612568.
<b>Formulation:</b>	Supplied at 0.5 mg/ml in Tris saline, 0.02% sodium azide, pH7.3 with 0.5% bovine serum albumin.
<b>Concentration:</b>	lot specific
<b>Purification:</b>	Purified from goat serum by ammonium sulphate precipitation followed by antigen affinity chromatography using the immunizing peptide. Supplied at 0.5 mg/ml in Tris saline, 0.02% sodium azide, pH7.3 with 0.5% bovine serum albumin. Aliquot and store at -20°C. Minimize freezing and thawing.
<b>Conjugation:</b>	Unconjugated
<b>Storage:</b>	Store at -20°C as received.
<b>Stability:</b>	Stable for 12 months from date of receipt.
<b>Gene Name:</b>	protein phosphatase 1 regulatory subunit 8
<b>Database Link:</b>	<a href="#">NP_002704</a> <a href="#">Entrez Gene 100336</a> <a href="#">MouseEntrez Gene 313030</a> <a href="#">RatEntrez Gene 487340</a> <a href="#">DogEntrez Gene 5511</a> <a href="#">Human</a> <a href="#">Q12972</a>



[View online »](#)

**Background:**

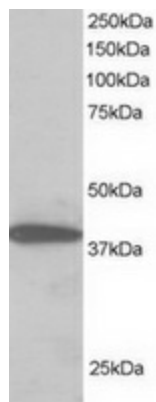
This gene, through alternative splicing, encodes three different isoforms. Two of the protein isoforms encoded by this gene are specific inhibitors of type 1 serine/threonine protein phosphatases and can bind but not cleave RNA. The third protein isoform lacks the phosphatase inhibitory function but is a single-strand endoribonuclease comparable to RNase E of *E. coli*. This isoform requires magnesium for its function and cleaves specific sites in A+U-rich regions of RNA. [provided by RefSeq]

**Synonyms:**

ARD-1; ARD1; NIPP-1; NIPP1; PRO2047

**Protein Families:**

Druggable Genome, Transcription Factors

**Product images:**

TA302884 staining (2ug/ml) of H460 lysate (RIPA buffer, 30ug total protein per lane). Primary incubated for 1 hour. Detected by western blot using chemiluminescence.