

Product datasheet for **TA302868**

CSN1 (GPS1) Goat Polyclonal Antibody

Product data:

Product Type:	Primary Antibodies
Applications:	WB
Recommended Dilution:	ELISA: 1:32,000. WB: 0.5µg/ml.
Reactivity:	Human (Expected from sequence similarity: Mouse, Rat, Dog, Cow)
Host:	Goat
Isotype:	IgG
Clonality:	Polyclonal
Immunogen:	Peptide with sequence C-PANSQSRMSTNM, from the C Terminus of the protein sequence according to NP_004118.
Formulation:	Supplied at 0.5 mg/ml in Tris saline, 0.02% sodium azide, pH7.3 with 0.5% bovine serum albumin.
Concentration:	lot specific
Purification:	Purified from goat serum by ammonium sulphate precipitation followed by antigen affinity chromatography using the immunizing peptide. Supplied at 0.5 mg/ml in Tris saline, 0.02% sodium azide, pH7.3 with 0.5% bovine serum albumin. Aliquot and store at -20°C. Minimize freezing and thawing.
Conjugation:	Unconjugated
Storage:	Store at -20°C as received.
Stability:	Stable for 12 months from date of receipt.
Gene Name:	G protein pathway suppressor 1
Database Link:	NP_004118 Entrez Gene 117039 RatEntrez Gene 209318 MouseEntrez Gene 483377 DogEntrez Gene 2873 Human Q13098
Background:	This gene is known to suppress G-protein and mitogen-activated signal transduction in mammalian cells. The encoded protein shares significant similarity with Arabidopsis FUS6, which is a regulator of light-mediated signal transduction in plant cells. Two alternatively spliced transcript variants encoding different isoforms have been found for this gene.

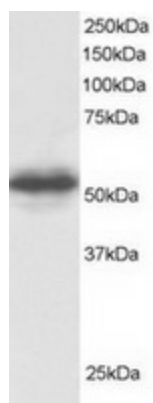


[View online »](#)

Synonyms: COPS1; CSN1; SGN1

Protein Families: Druggable Genome

Product images:



TA302868 staining (0.5ug/ml) of Human Testis lysate (RIPA buffer, 30ug total protein per lane). Primary incubated for 1 hour. Detected by western blot using chemiluminescence.