

## Product datasheet for **TA302865**

### TRIM5 alpha (TRIM5) Goat Polyclonal Antibody

#### Product data:

Product Type:	Primary Antibodies
Applications:	IHC, WB
Recommended Dilution:	ELISA: 1:16,000. WB: 1-3µg/ml. IHC: 1.0µg/ml.
Reactivity:	Human
Host:	Goat
Isotype:	IgG
Clonality:	Polyclonal
Immunogen:	Peptide with sequence ASGILVNVKKEEVTTC, from the N Terminus of the protein sequence according to NP_149023.1; NP_149083.1; NP_149084.1.
Formulation:	Supplied at 0.5 mg/ml in Tris saline, 0.02% sodium azide, pH7.3 with 0.5% bovine serum albumin.
Concentration:	lot specific
Purification:	Purified from goat serum by ammonium sulphate precipitation followed by antigen affinity chromatography using the immunizing peptide. Supplied at 0.5 mg/ml in Tris saline, 0.02% sodium azide, pH7.3 with 0.5% bovine serum albumin. Aliquot and store at -20°C. Minimize freezing and thawing.
Conjugation:	Unconjugated
Storage:	Store at -20°C as received.
Stability:	Stable for 12 months from date of receipt.
Gene Name:	tripartite motif containing 5
Database Link:	<a href="#">NP_149023</a> <a href="#">Entrez Gene 85363 Human</a> <a href="#">Q9C035</a>



[View online »](#)

**Background:**

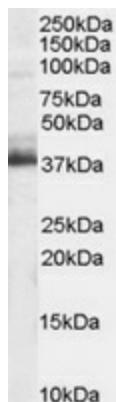
The protein encoded by this gene is a member of the tripartite motif (TRIM) family. The TRIM motif includes three zinc-binding domains, a RING, a B-box type 1 and a B-box type 2, and a coiled-coil region. The protein localizes to cytoplasmic bodies. Its function has not been identified. Five alternatively spliced transcript variants for this gene have been described. However, the full length nature of two of the variants has not been determined. [provided by RefSeq]

**Synonyms:**

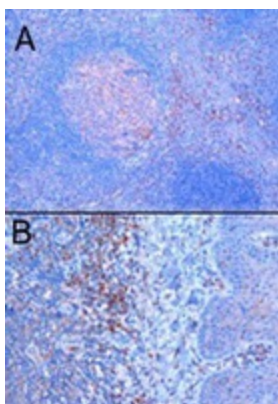
RNF88; TRIM5alpha

**Protein Families:**

Druggable Genome

**Product images:**


TA302865 staining (1ug/ml) of Human Brain lysate (RIPA buffer, 35ug total protein per lane). Primary incubated for 1 hour. Detected by western blot using chemiluminescence.



TA302865il. Microwaved antigen retrieval with citrate buffer pH 6, HRP-staining. A) positive cells next to a secondary follicle, B) positive cells below tonsillar epithelium.