

## Product datasheet for **TA302859**

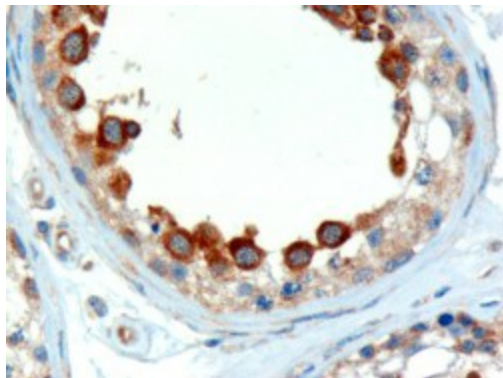
### ALMS1 Goat Polyclonal Antibody

#### Product data:

Product Type:	Primary Antibodies
Applications:	IHC
Recommended Dilution:	ELISA: 1:32,000. WB: 1-3µg/ml.
Reactivity:	Human (Expected from sequence similarity: Mouse, Rat, Dog, Cow)
Host:	Goat
Isotype:	IgG
Clonality:	Polyclonal
Immunogen:	Peptide with sequence C-RVTNQLLGRKVPWD, from the C Terminus of the protein sequence according to NP_055935.3.
Formulation:	Supplied at 0.5 mg/ml in Tris saline, 0.02% sodium azide, pH7.3 with 0.5% bovine serum albumin.
Concentration:	lot specific
Purification:	Purified from goat serum by ammonium sulphate precipitation followed by antigen affinity chromatography using the immunizing peptide. Supplied at 0.5 mg/ml in Tris saline, 0.02% sodium azide, pH7.3 with 0.5% bovine serum albumin. Aliquot and store at -20°C. Minimize freezing and thawing.
Conjugation:	Unconjugated
Storage:	Store at -20°C as received.
Stability:	Stable for 12 months from date of receipt.
Gene Name:	ALMS1, centrosome and basal body associated protein
Database Link:	<a href="#">NP_055935</a> <a href="#">Entrez Gene 236266</a> <a href="#">MouseEntrez Gene 297408</a> <a href="#">RatEntrez Gene 475795</a> <a href="#">DogEntrez Gene 7840</a> <a href="#">Human</a> <a href="#">Q8TCU4</a>
Background:	Alstrom syndrome protein 1
Synonyms:	ALSS



[View online »](#)

**Product images:**

TA302859 (2ug/ml) staining of paraffin embedded Human Testis. Microwaved antigen retrieval with Tris/EDTA buffer pH9, HRP-staining.