

Product datasheet for **TA302856**

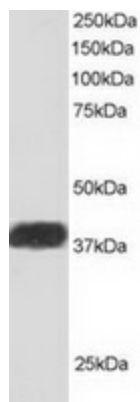
ALS2CR1 (NIF3L1) Goat Polyclonal Antibody

Product data:

Product Type:	Primary Antibodies
Applications:	WB
Recommended Dilution:	ELISA: 1:32,000. WB: 0.2-1µg/ml.
Reactivity:	Human (Expected from sequence similarity: Mouse)
Host:	Goat
Isotype:	IgG
Clonality:	Polyclonal
Immunogen:	Peptide with sequence C-ILSETDRDPLQVV, from the C Terminus of the protein sequence according to NP_068596.
Formulation:	Supplied at 0.5 mg/ml in Tris saline, 0.02% sodium azide, pH7.3 with 0.5% bovine serum albumin.
Concentration:	lot specific
Purification:	Purified from goat serum by ammonium sulphate precipitation followed by antigen affinity chromatography using the immunizing peptide. Supplied at 0.5 mg/ml in Tris saline, 0.02% sodium azide, pH7.3 with 0.5% bovine serum albumin. Aliquot and store at -20°C. Minimize freezing and thawing.
Conjugation:	Unconjugated
Storage:	Store at -20°C as received.
Stability:	Stable for 12 months from date of receipt.
Gene Name:	NGG1 interacting factor 3 like 1
Database Link:	NP_001129511 Entrez Gene 65102 Mouse Entrez Gene 60491 Human Q9GZT8
Background:	Amyotrophic lateral sclerosis 2 chromosomal region candidate gene 1 protein
Synonyms:	ALS2CR1; CALS-7; MDS015



[View online »](#)

Product images:

TA302856 staining (1 ug/ml) of Human Heart lysate (RIPA buffer, 30ug total protein per lane). Primary incubated for 1 hour. Detected by western blot using chemiluminescence.