

## Product datasheet for **TA302853**

### Mid2 Goat Polyclonal Antibody

#### Product data:

Product Type:	Primary Antibodies
Applications:	IHC, WB
Recommended Dilution:	ELISA: 1:32,000. WB: 1-3µg/ml. IHC: 5-10µg/ml.
Reactivity:	Mouse, Human (Expected from sequence similarity: Rat, Dog, Pig, Cow)
Host:	Goat
Isotype:	IgG
Clonality:	Polyclonal
Immunogen:	Peptide with sequence QESPYVSGMKTCH, from the C Terminus of the protein sequence according to NP_036348.1; NP_438112.1.
Formulation:	Supplied at 0.5 mg/ml in Tris saline, 0.02% sodium azide, pH7.3 with 0.5% bovine serum albumin.
Concentration:	lot specific
Purification:	Purified from goat serum by ammonium sulphate precipitation followed by antigen affinity chromatography using the immunizing peptide. Supplied at 0.5 mg/ml in Tris saline, 0.02% sodium azide, pH7.3 with 0.5% bovine serum albumin. Aliquot and store at -20°C. Minimize freezing and thawing.
Conjugation:	Unconjugated
Storage:	Store at -20°C as received.
Stability:	Stable for 12 months from date of receipt.
Gene Name:	midline 2
Database Link:	<a href="#">NP_035975</a> <a href="#">Entrez Gene 11043 Human</a> <a href="#">Entrez Gene 363502 Rat</a> <a href="#">Entrez Gene 481012 Dog</a> <a href="#">Entrez Gene 23947 Mouse</a> <a href="#">Q9QUS6</a>



[View online »](#)

**Background:**

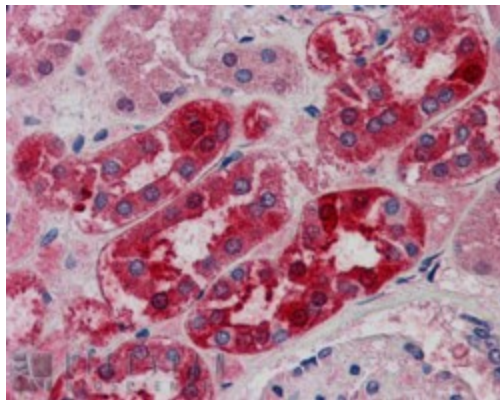
The protein encoded by this gene is a member of the tripartite motif (TRIM) family. The TRIM motif includes three zinc-binding domains, a RING, a B-box type 1 and a B-box type 2, and a coiled-coil region. The protein localizes to microtubular structures in the cytoplasm. Alternate splicing of this gene results in two transcript variants encoding different isoforms. [provided by RefSeq]

**Synonyms:**

FLJ37715; FLJ41813; FXY2; Midin-2; RNF60; TRIM1

**Product images:**


TA302853 (1ug/ml) staining of mouse heart lysate (RIPA buffer, 35ug total protein per lane). Primary incubated for 1 hour. Detected by western blot using chemiluminescence.



TA302853 (5ug/ml) staining of paraffin embedded Human Kidney. Steamed antigen retrieval with citrate buffer pH 6, AP-staining.