

## Product datasheet for **TA302852**

### RNF39 Goat Polyclonal Antibody

#### Product data:

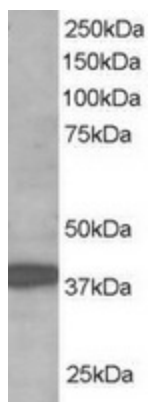
Product Type:	Primary Antibodies
Applications:	WB
Recommended Dilution:	ELISA: 1:16,000. WB: 1-3µg/ml.
Reactivity:	Human (Expected from sequence similarity: Rat, Pig)
Host:	Goat
Isotype:	IgG
Clonality:	Polyclonal
Immunogen:	Peptide with sequence CDPRAPLRIVPAES, from the C Terminus of the protein sequence according to NP_079512.1; NP_739575.1.
Formulation:	Supplied at 0.5 mg/ml in Tris saline, 0.02% sodium azide, pH7.3 with 0.5% bovine serum albumin.
Concentration:	lot specific
Purification:	Purified from goat serum by ammonium sulphate precipitation followed by antigen affinity chromatography using the immunizing peptide. Supplied at 0.5 mg/ml in Tris saline, 0.02% sodium azide, pH7.3 with 0.5% bovine serum albumin. Aliquot and store at -20°C. Minimize freezing and thawing.
Conjugation:	Unconjugated
Storage:	Store at -20°C as received.
Stability:	Stable for 12 months from date of receipt.
Gene Name:	ring finger protein 39
Database Link:	<a href="#">NP_079512</a> <a href="#">Entrez Gene 171387 Rat</a> <a href="#">Entrez Gene 80352 Human</a> <a href="#">Q9H2S5</a>
Background:	This gene lies within the major histocompatibility complex class I region on chromosome 6. Studies of a similar rat protein suggest that this gene encodes a protein that plays a role in an early phase of synaptic plasticity. Multiple transcript variants encoding different isoforms have been found for this gene. [provided by RefSeq]
Synonyms:	HZF; HZFW; LIRF



[View online »](#)

Protein Families: Druggable Genome

### Product images:



TA302852 staining (1ug/ml) of human brain lysate (RIPA buffer, 35ug total protein per lane). Primary incubated for 1 hour. Detected by western blot using chemiluminescence.