

## Product datasheet for **TA302851**

### CHFR Goat Polyclonal Antibody

#### Product data:

Product Type:	Primary Antibodies
Applications:	IHC
Recommended Dilution:	ELISA: 1:64,000. WB: 2.5µg/ml.
Reactivity:	Human (Expected from sequence similarity: Mouse, Rat, Pig, Cow)
Host:	Goat
Isotype:	IgG
Clonality:	Polyclonal
Immunogen:	Peptide with sequence KFNHICEQTRFKN, from the C Terminus of the protein sequence according to NP_060693.
Formulation:	Supplied at 0.5 mg/ml in Tris saline, 0.02% sodium azide, pH7.3 with 0.5% bovine serum albumin.
Concentration:	lot specific
Purification:	Purified from goat serum by ammonium sulphate precipitation followed by antigen affinity chromatography using the immunizing peptide. Supplied at 0.5 mg/ml in Tris saline, 0.02% sodium azide, pH7.3 with 0.5% bovine serum albumin. Aliquot and store at -20°C. Minimize freezing and thawing.
Conjugation:	Unconjugated
Storage:	Store at -20°C as received.
Stability:	Stable for 12 months from date of receipt.
Gene Name:	checkpoint with forkhead and ring finger domains, E3 ubiquitin protein ligase
Database Link:	<a href="#">NP_060693</a> <a href="#">Entrez Gene 231600 Mouse</a> <a href="#">Entrez Gene 288734 Rat</a> <a href="#">Entrez Gene 55743 Human</a> <a href="#">Q96EP1</a>



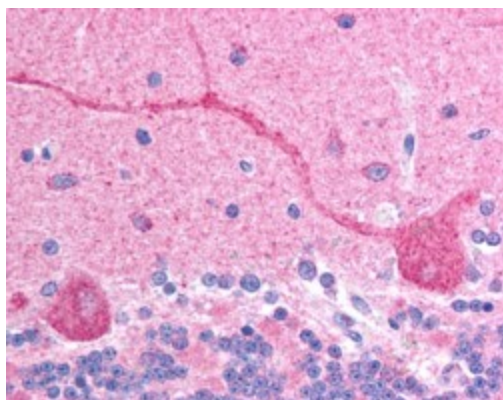
[View online »](#)

**Background:** E3 ubiquitin-protein ligase required to transiently arrest cells in early prophase when they are exposed to microtubule poisons. Acts in early prophase before chromosome condensation, when the centrosome move apart from each other along the periphery of the nucleus. Probably promotes the formation of 'Lys-63'-linked polyubiquitin chains and functions with the specific ubiquitin-conjugating UBC13-MMS2 (UBE2N-UBE2V2) heterodimer. Substrates that are polyubiquitinated at 'Lys-63' are usually not targeted for degradation, but are rather involved in signaling cellular stress. This suggests that it may be involved in signaling the presence of mitotic stress caused by microtubule poisons

**Synonyms:** RNF116; RNF196

**Protein Families:** Druggable Genome

**Product images:**



TA302851 (2.5ug/ml) staining of paraffin embedded human brain (cerebellum). Steamed antigen retrieval with citrate buffer pH 6, AP-staining.