

Product datasheet for **TA302850**

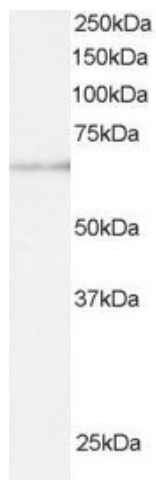
ARIH1 Goat Polyclonal Antibody

Product data:

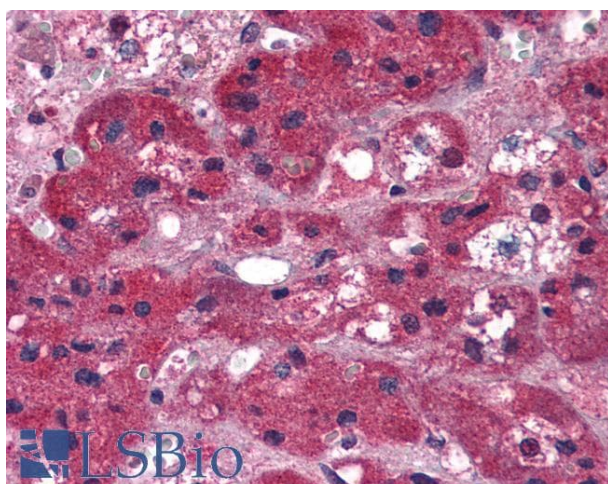
Product Type:	Primary Antibodies
Applications:	IHC, PEP-ELISA, WB
Recommended Dilution:	ELISA: 1:32000. WB: 0.2-1µg/ml.IHC:5µg/ml
Reactivity:	Human (Expected from sequence similarity: Mouse, Cow)
Host:	Goat
Isotype:	IgG
Clonality:	Polyclonal
Immunogen:	Peptide with sequence C-HEGYEKDLWEYIED, from the C Terminus of the protein sequence according to NP_005735.
Formulation:	Supplied at 0.5 mg/ml in Tris saline, 0.02% sodium azide, pH7.3 with 0.5% bovine serum albumin.
Concentration:	lot specific
Purification:	Purified from goat serum by ammonium sulphate precipitation followed by antigen affinity chromatography using the immunizing peptide. Supplied at 0.5 mg/ml in Tris saline, 0.02% sodium azide, pH7.3 with 0.5% bovine serum albumin. Aliquot and store at -20°C. Minimize freezing and thawing.
Conjugation:	Unconjugated
Storage:	Store at -20°C as received.
Stability:	Stable for 12 months from date of receipt.
Gene Name:	ariadne RBR E3 ubiquitin protein ligase 1
Database Link:	NP_005735 Entrez Gene 23806 Mouse Entrez Gene 25820 Human Q9Y4X5
Background:	Might act as an E3 ubiquitin-protein ligase, or as part of the E3 complex, which accepts ubiquitin from specific E2 ubiquitin-conjugating enzymes, such as UBE2L3/UBCM4, and then transfers it to substrates
Synonyms:	ARI; HARI; HHARI; UBCH7BP
Protein Families:	Druggable Genome



[View online »](#)

Product images:

TA302850 staining (0.5 μ g/ml) of U937 lysate (RIPA buffer, 30 μ g total protein per lane). Detected by chemiluminescence.



TA302850 (5 μ g/ml) staining of paraffin embedded Human Adrenal Gland. Steamed antigen retrieval with citrate buffer pH 6, AP-staining.