

Product datasheet for **TA302844**

SETMAR Goat Polyclonal Antibody

Product data:

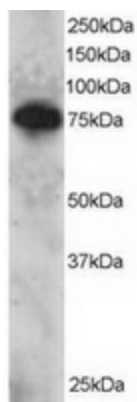
Product Type:	Primary Antibodies
Applications:	WB
Recommended Dilution:	WB: 1-3µg/ml.
Reactivity:	Human (Expected from sequence similarity: Cow)
Host:	Goat
Isotype:	IgG
Clonality:	Polyclonal
Immunogen:	Peptide with sequence RWQKCVCNGSYFD, from the C Terminus of the protein sequence according to NP_006506.
Formulation:	Supplied at 0.5 mg/ml in Tris saline, 0.02% sodium azide, pH7.3 with 0.5% bovine serum albumin.
Concentration:	lot specific
Purification:	Purified from goat serum by ammonium sulphate precipitation followed by antigen affinity chromatography using the immunizing peptide. Supplied at 0.5 mg/ml in Tris saline, 0.02% sodium azide, pH7.3 with 0.5% bovine serum albumin. Aliquot and store at -20°C. Minimize freezing and thawing.
Conjugation:	Unconjugated
Storage:	Store at -20°C as received.
Stability:	Stable for 12 months from date of receipt.
Gene Name:	SET domain and mariner transposase fusion gene
Database Link:	NP_006506 Entrez Gene 6419 Human Q53H47
Background:	Histone methyltransferase that methylates 'Lys-4' and 'Lys-36' of histone H3, 2 specific tags for epigenetic transcriptional activation. Specifically mediates dimethylation of H3 'Lys-36'. Binds DNA. May play a role in non-homologous end-joining repair
Synonyms:	Mar1; METNASE
Protein Families:	Druggable Genome, Transcription Factors



[View online »](#)

Protein Pathways: Lysine degradation

Product images:



TA302844 staining (2ug/ml) of Daudi lysate (RIPA buffer, 30ug total protein per lane). Primary incubated for 12 hour. Detected by western blot using chemiluminescence.