

Product datasheet for **TA302843**

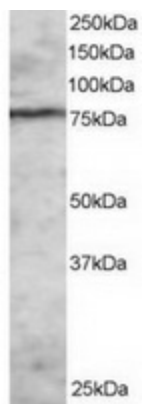
EZH1 Goat Polyclonal Antibody

Product data:

Product Type:	Primary Antibodies
Applications:	WB
Recommended Dilution:	WB: 1-3µg/ml.
Reactivity:	Human (Expected from sequence similarity: Mouse, Cow)
Host:	Goat
Isotype:	IgG
Clonality:	Polyclonal
Immunogen:	Peptide with sequence EIPNPPTSKCITY, from the N Terminus of the protein sequence according to NP_001982.2.
Formulation:	Supplied at 0.5 mg/ml in Tris saline, 0.02% sodium azide, pH7.3 with 0.5% bovine serum albumin.
Concentration:	lot specific
Purification:	Purified from goat serum by ammonium sulphate precipitation followed by antigen affinity chromatography using the immunizing peptide. Supplied at 0.5 mg/ml in Tris saline, 0.02% sodium azide, pH7.3 with 0.5% bovine serum albumin. Aliquot and store at -20°C. Minimize freezing and thawing.
Conjugation:	Unconjugated
Storage:	Store at -20°C as received.
Stability:	Stable for 12 months from date of receipt.
Gene Name:	enhancer of zeste 1 polycomb repressive complex 2 subunit
Database Link:	NP_001982 Entrez Gene 14055 Mouse Entrez Gene 2145 Human Q92800
Background:	May be involved in the regulation of gene transcription and chromatin structure
Synonyms:	KMT6B
Protein Families:	Druggable Genome, Transcription Factors



[View online »](#)

Product images:

TA302843 staining (2ug/ml) of MOLT-4 lysate (RIPA buffer, 30ug total protein per lane). Primary incubated for 1 hour. Detected by western blot using chemiluminescence.