

Product datasheet for **TA302842**

SETDB2 Goat Polyclonal Antibody

Product data:

Product Type:	Primary Antibodies
Applications:	WB
Recommended Dilution:	ELISA: 1:1,000. WB: 0.3-1 µg/ml.
Reactivity:	Human (Expected from sequence similarity: Mouse, Rat, Dog, Pig, Cow)
Host:	Goat
Isotype:	IgG
Clonality:	Polyclonal
Immunogen:	Peptide with sequence GEKNGDAKTFWME-C, from the N Terminus of the protein sequence according to NP_114121.1.
Formulation:	Supplied at 0.5 mg/ml in Tris saline, 0.02% sodium azide, pH7.3 with 0.5% bovine serum albumin.
Concentration:	lot specific
Purification:	Purified from goat serum by ammonium sulphate precipitation followed by antigen affinity chromatography using the immunizing peptide. Supplied at 0.5 mg/ml in Tris saline, 0.02% sodium azide, pH7.3 with 0.5% bovine serum albumin. Aliquot and store at -20°C. Minimize freezing and thawing.
Conjugation:	Unconjugated
Storage:	Store at -20°C as received.
Stability:	Stable for 12 months from date of receipt.
Gene Name:	SET domain bifurcated 2
Database Link:	NP_114121 Entrez Gene 239122 Mouse Entrez Gene 100361710 Rat Entrez Gene 485441 Dog Entrez Gene 83852 Human Q96T68
Background:	Proteins that contain a SET domain, such as SETDB2, modulate gene expression epigenetically through histone H3 (see MIM 601128) methylation. SETDB2 is likely a histone H3 methyltransferase, as it contains both the active site and flanking cysteine residues required for catalytic activity (Zhang et al., 2003 [PubMed 12754510]). [supplied by OMIM]



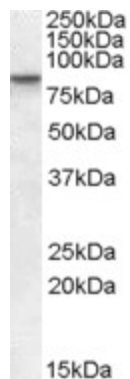
[View online »](#)

Synonyms: C13orf4; CLLD8; CLLL8; KMT1F

Protein Families: Druggable Genome

Protein Pathways: Lysine degradation

Product images:



TA302842 (0.5ug/ml) staining of human heart lysate (35ug protein in RIPA buffer). Primary incubation was 1 hour. Detected by chemiluminescence.