

Product datasheet for **TA302840**

NDRG1 Goat Polyclonal Antibody

Product data:

Product Type:	Primary Antibodies
Applications:	IHC, WB
Recommended Dilution:	ELISA: 1:32,000. WB: 0.1-0.3µg/ml.IHC:2.5µg/m
Reactivity:	Human (Expected from sequence similarity: Mouse, Rat, Dog)
Host:	Goat
Isotype:	IgG
Clonality:	Polyclonal
Immunogen:	Peptide with sequence GNSAGPKSMEVSC, from the C Terminus of the protein sequence according to NP_006087.2.
Formulation:	Supplied at 0.5 mg/ml in Tris saline, 0.02% sodium azide, pH7.3 with 0.5% bovine serum albumin.
Purification:	Purified from goat serum by ammonium sulphate precipitation followed by antigen affinity chromatography using the immunizing peptide. Supplied at 0.5 mg/ml in Tris saline, 0.02% sodium azide, pH7.3 with 0.5% bovine serum albumin. Aliquot and store at -20°C. Minimize freezing and thawing.
Conjugation:	Unconjugated
Storage:	Store at -20°C as received.
Stability:	Stable for 12 months from date of receipt.
Gene Name:	N-myc downstream regulated 1
Database Link:	NP_001128714 Entrez Gene 17988 Mouse Entrez Gene 299923 Rat Entrez Gene 482049 Dog Entrez Gene 10397 Human Q92597



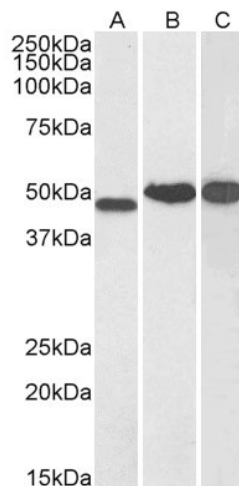
[View online »](#)

Background:

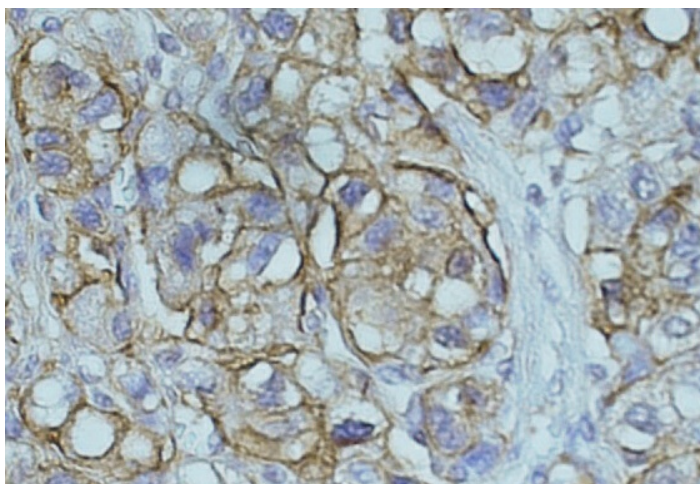
This gene is a member of the N-myc downregulated gene family which belongs to the alpha/beta hydrolase superfamily. The protein encoded by this gene is a cytoplasmic protein involved in stress responses, hormone responses, cell growth, and differentiation. It is necessary for p53-mediated caspase activation and apoptosis. Mutation in this gene has been reported to be causative for hereditary motor and sensory neuropathy-Lom. Multiple alternatively spliced variants, encoding the same protein, have been identified. [provided by RefSeq]

Synonyms:

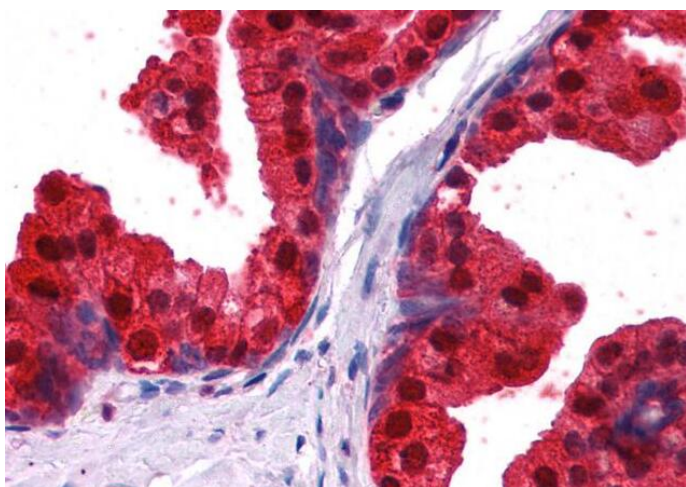
CAP43; CMT4D; DRG-1; DRG1; GC4; HMSNL; NDR1; NMSL; PROXY1; RIT42; RTP; TARG1; TDD5

Product images:


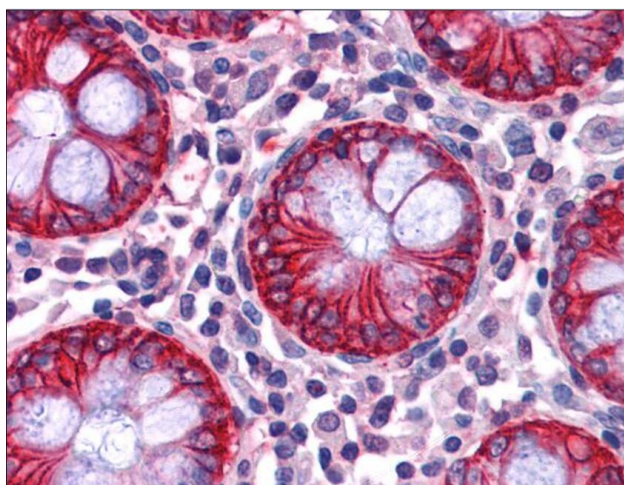
TA302840 (0.1ug/ml) staining of Human Kidney (A), Cerebellum (B) and Testis (C) lysate (35ug protein in RIPA buffer). Primary incubation was 1 hour. Detected by chemiluminescence.



TA302840 (0.5ug/ml) staining of paraffin embedded Human hepatocellular carcinoma. Data obtained from C. Furer, Visceral Surgery, University of Bern, Switzerland.



TA302840 (2.5ug/ml) staining of paraffin embedded Human Prostate. Steamed antigen retrieval with citrate buffer pH 6, AP-staining.



TA302840 (2.5ug/ml) staining of paraffin embedded Human Colon. Steamed antigen retrieval with citrate buffer pH 6, AP-staining.