

Product datasheet for **TA302839**

GCIP interacting protein p29 (SYF2) Goat Polyclonal Antibody

Product data:

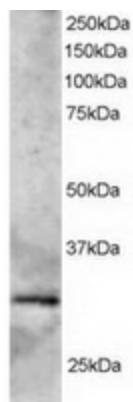
Product Type:	Primary Antibodies
Applications:	WB
Recommended Dilution:	WB: 1-3µg/ml.
Reactivity:	Human, Mouse (Expected from sequence similarity: Rat, Dog, Cow)
Host:	Goat
Isotype:	IgG
Clonality:	Polyclonal
Immunogen:	Peptide with sequence C-AEIKQNLERGTAV, from the C Terminus of the protein sequence according to NP_056299.
Formulation:	Supplied at 0.5 mg/ml in Tris saline, 0.02% sodium azide, pH7.3 with 0.5% bovine serum albumin.
Concentration:	lot specific
Purification:	Purified from goat serum by ammonium sulphate precipitation followed by antigen affinity chromatography using the immunizing peptide. Supplied at 0.5 mg/ml in Tris saline, 0.02% sodium azide, pH7.3 with 0.5% bovine serum albumin. Aliquot and store at -20°C. Minimize freezing and thawing.
Conjugation:	Unconjugated
Storage:	Store at -20°C as received.
Stability:	Stable for 12 months from date of receipt.
Gene Name:	SYF2 pre-mRNA splicing factor
Database Link:	NP_056299 Entrez Gene 68592 Mouse Entrez Gene 170933 Rat Entrez Gene 478184 Dog Entrez Gene 25949 Human O95926
Background:	This gene encodes a nuclear protein that interacts with cyclin D-type binding-protein 1, which is thought to be a cell cycle regulator at the G1/S transition. Alternate transcriptional splice variants, encoding different isoforms, have been characterized. [provided by RefSeq]
Synonyms:	CBPIN; fSAP29; NTC31; P29



[View online »](#)

Protein Pathways: Spliceosome

Product images:



TA302839 staining (2ug/ml) of Human Heart lysate (RIPA buffer, 35ug total protein per lane). Primary incubated for 1 hour. Detected by western blot using chemiluminescence.