

## Product datasheet for **TA302832**

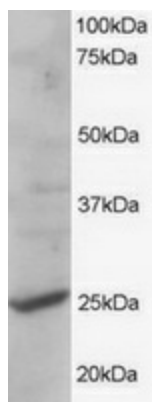
### **CYB561D2 Goat Polyclonal Antibody**

#### **Product data:**

<b>Product Type:</b>	Primary Antibodies
<b>Applications:</b>	WB
<b>Recommended Dilution:</b>	ELISA: 1:16,000. WB: 1-3µg/ml.
<b>Reactivity:</b>	Human (Expected from sequence similarity: Mouse, Rat, Dog, Cow)
<b>Host:</b>	Goat
<b>Isotype:</b>	IgG
<b>Clonality:</b>	Polyclonal
<b>Immunogen:</b>	Peptide with sequence C-VSNAYLYRKRIQP, from the C Terminus of the protein sequence according to NP_008953.
<b>Formulation:</b>	Supplied at 0.5 mg/ml in Tris saline, 0.02% sodium azide, pH7.3 with 0.5% bovine serum albumin.
<b>Concentration:</b>	lot specific
<b>Purification:</b>	Purified from goat serum by ammonium sulphate precipitation followed by antigen affinity chromatography using the immunizing peptide. Supplied at 0.5 mg/ml in Tris saline, 0.02% sodium azide, pH7.3 with 0.5% bovine serum albumin. Aliquot and store at -20°C. Minimize freezing and thawing.
<b>Conjugation:</b>	Unconjugated
<b>Storage:</b>	Store at -20°C as received.
<b>Stability:</b>	Stable for 12 months from date of receipt.
<b>Gene Name:</b>	cytochrome b561 family member D2
<b>Database Link:</b>	<a href="#">NP_008953</a> <a href="#">Entrez Gene 56368 Mouse</a> <a href="#">Entrez Gene 363137 Rat</a> <a href="#">Entrez Gene 484759 Dog</a> <a href="#">Entrez Gene 11068 Human</a> <a href="#">O14569</a>
<b>Background:</b>	Putative tumor suppressor protein 101F6
<b>Synonyms:</b>	101F6; TSP10; XXcos-LUCA11.4
<b>Protein Families:</b>	Druggable Genome, Transmembrane



[View online »](#)

**Product images:**

TA302832 staining (1ug/ml) of human liver lysate (RIPA buffer, 35ug total protein per lane). Primary incubated for 1 hour. Detected by western blot using chemiluminescence.