

Product datasheet for **TA302818**

CABP (CABP1) Goat Polyclonal Antibody

Product data:

Product Type:	Primary Antibodies
Applications:	WB
Recommended Dilution:	WB: 0.5-2µg/ml.
Reactivity:	Human
Host:	Goat
Isotype:	IgG
Clonality:	Polyclonal
Immunogen:	Peptide with sequence GNCVKYPLRNLS, from the N Terminus of the protein sequence according to NP_004267; NP_112482.
Formulation:	Supplied at 0.5 mg/ml in Tris saline, 0.02% sodium azide, pH7.3 with 0.5% bovine serum albumin.
Concentration:	lot specific
Purification:	Purified from goat serum by ammonium sulphate precipitation followed by antigen affinity chromatography using the immunizing peptide. Supplied at 0.5 mg/ml in Tris saline, 0.02% sodium azide, pH7.3 with 0.5% bovine serum albumin. Aliquot and store at -20°C. Minimize freezing and thawing.
Conjugation:	Unconjugated
Storage:	Store at -20°C as received.
Stability:	Stable for 12 months from date of receipt.
Gene Name:	calcium binding protein 1
Database Link:	NP_001028849 Entrez Gene 9478 Human Q9NZU7



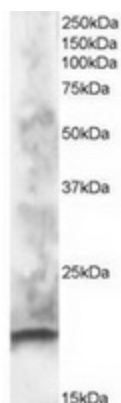
[View online »](#)

Background:

The product of this gene belongs to a subfamily of calcium binding proteins, which share similarity to calmodulin. Calcium binding proteins are an important component of calcium mediated cellular signal transduction. Expression of this gene was only detected in retina and brain. Study of the mouse homolog demonstrated that groups of cells expressing this protein are located in the center or inner border of the inner unclar layer of retina. Three alternatively spliced variants encoding different isoforms have been described.

Synonyms:

CALBRAIN; HCALB_BR

Product images:

TA302818 staining (1ug/ml) of human brain lysate (RIPA buffer, 30ug total protein per lane). Primary incubated for 1 hour. Detected by western blot using chemiluminescence.