

## Product datasheet for **TA302812**

### SF3B4 Goat Polyclonal Antibody

#### Product data:

Product Type:	Primary Antibodies
Applications:	WB
Recommended Dilution:	ELISA: 1:32,000. WB: 0.1-0.3µg/ml.
Reactivity:	Human (Expected from sequence similarity: Mouse, Rat, Dog, Pig, Cow)
Host:	Goat
Isotype:	IgG
Clonality:	Polyclonal
Immunogen:	Peptide with sequence AAGPISERNQDAT-C, from the N Terminus of the protein sequence according to NP_005841.1.
Formulation:	Supplied at 0.5 mg/ml in Tris saline, 0.02% sodium azide, pH7.3 with 0.5% bovine serum albumin.
Concentration:	lot specific
Purification:	Purified from goat serum by ammonium sulphate precipitation followed by antigen affinity chromatography using the immunizing peptide. Supplied at 0.5 mg/ml in Tris saline, 0.02% sodium azide, pH7.3 with 0.5% bovine serum albumin. Aliquot and store at -20°C. Minimize freezing and thawing.
Conjugation:	Unconjugated
Storage:	Store at -20°C as received.
Stability:	Stable for 12 months from date of receipt.
Gene Name:	splicing factor 3b subunit 4
Database Link:	<a href="#">NP_005841</a> <a href="#">Entrez Gene 107701 Mouse</a> <a href="#">Entrez Gene 295270 Rat</a> <a href="#">Entrez Gene 483177 Dog</a> <a href="#">Entrez Gene 10262 Human</a> <a href="#">Q15427</a>



[View online »](#)

**Background:**

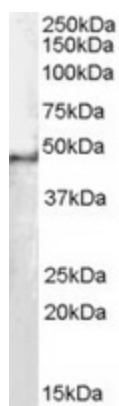
This gene encodes one of four subunits of the splicing factor 3B. The protein encoded by this gene cross-links to a region in the pre-mRNA immediately upstream of the branchpoint sequence in pre-mRNA in the prespliceosomal complex A. It also may be involved in the assembly of the B, C and E spliceosomal complexes. In addition to RNA-binding activity, this protein interacts directly and highly specifically with subunit 2 of the splicing factor 3B. This protein contains two N-terminal RNA-recognition motifs (RRMs), consistent with the observation that it binds directly to pre-mRNA. [provided by RefSeq]

**Synonyms:**

AFD1; Hsh49; SAP49; SF3b49

**Protein Pathways:**

Spliceosome

**Product images:**

TA302812 staining (0.1 ug/ml) of HeLa lysate (RIPA buffer, 35ug total protein per lane). Primary incubated for 1 hour. Detected by western blot using chemiluminescence.