

Product datasheet for **TA302810**

E74 like factor 1 (ELF1) Goat Polyclonal Antibody

Product data:

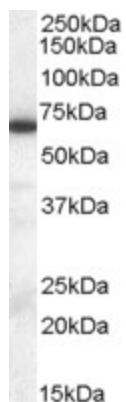
Product Type:	Primary Antibodies
Applications:	WB
Recommended Dilution:	ELISA: 1:64,000. WB: 0.3-1.0µg/ml.
Reactivity:	Human (Expected from sequence similarity: Mouse)
Host:	Goat
Isotype:	IgG
Clonality:	Polyclonal
Immunogen:	Peptide with sequence C-AMKQNELLEPNSF, from the C Terminus of the protein sequence according to NP_758961.1.
Formulation:	Supplied at 0.5 mg/ml in Tris saline, 0.02% sodium azide, pH7.3 with 0.5% bovine serum albumin.
Concentration:	lot specific
Purification:	Purified from goat serum by ammonium sulphate precipitation followed by antigen affinity chromatography using the immunizing peptide. Supplied at 0.5 mg/ml in Tris saline, 0.02% sodium azide, pH7.3 with 0.5% bovine serum albumin. Aliquot and store at -20°C. Minimize freezing and thawing.
Conjugation:	Unconjugated
Storage:	Store at -20°C as received.
Stability:	Stable for 12 months from date of receipt.
Gene Name:	E74 like ETS transcription factor 1
Database Link:	NP_001138825 Entrez Gene 13709 Mouse Entrez Gene 1997 Human P32519
Background:	This gene encodes an E26 transformation-specific related transcription factor. The encoded protein is primarily expressed in lymphoid cells and acts as both an enhancer and a repressor to regulate transcription of various genes. Alternative splicing results in multiple transcript variants. [provided by RefSeq]
Synonyms:	E74-like factor 1 (ets domain transcription factor); OTTHUMP00000018310



[View online »](#)

Protein Families: Transcription Factors

Product images:



TA302810 staining (0.3ug/ml) of Human Tonsil lysate (RIPA buffer, 35ug total protein per lane). Primary incubated for 1 hour. Detected by western blot using chemiluminescence.