

Product datasheet for **TA302807**

CBR1 Goat Polyclonal Antibody

Product data:

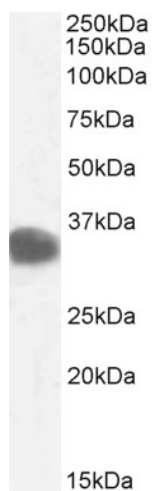
Product Type:	Primary Antibodies
Applications:	IHC, WB
Recommended Dilution:	ELISA: 1:16,000. WB: 0.2-0.5µg/ml. IHC: 1-2µg/ml.
Reactivity:	Human
Host:	Goat
Isotype:	IgG
Clonality:	Polyclonal
Immunogen:	Peptide with sequence C-HGQFVSEKRVEQW, from the C Terminus of the protein sequence according to NP_001748.1.
Formulation:	Supplied at 0.5 mg/ml in Tris saline, 0.02% sodium azide, pH7.3 with 0.5% bovine serum albumin.
Purification:	Purified from goat serum by ammonium sulphate precipitation followed by antigen affinity chromatography using the immunizing peptide. Supplied at 0.5 mg/ml in Tris saline, 0.02% sodium azide, pH7.3 with 0.5% bovine serum albumin. Aliquot and store at -20°C. Minimize freezing and thawing.
Conjugation:	Unconjugated
Storage:	Store at -20°C as received.
Stability:	Stable for 12 months from date of receipt.
Gene Name:	carbonyl reductase 1
Database Link:	NP_001748 Entrez Gene 873 Human P16152
Background:	Carbonyl reductase is one of several monomeric, NADPH-dependent oxidoreductases having wide specificity for carbonyl compounds. This enzyme is widely distributed in human tissues. Another carbonyl reductase gene, CRB3, lies close to this gene on chromosome 21q. [provided by RefSeq]
Synonyms:	CBR; hCBR1; SDR21C1
Protein Families:	Druggable Genome



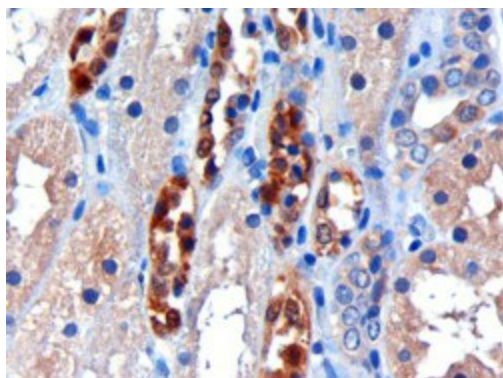
[View online »](#)

Protein Pathways: Arachidonic acid metabolism, Metabolic pathways

Product images:



TA302807 (0.1ug/ml) staining of Human Kidney lysate (35ug protein in RIPA buffer). Detected by chemiluminescence.



TA302807 (3ug/ml) staining of paraffin embedded Human Kidney. Microwaved antigen retrieval with citrate buffer pH 6, HRP-staining.