

## Product datasheet for **TA302805**

### AIRE Goat Polyclonal Antibody

#### Product data:

Product Type:	Primary Antibodies
Applications:	IHC, WB
Recommended Dilution:	ELISA: 1:128,000; WB: 0.5-1.5 ug/ml; IHC: 2.5µg/ml.
Reactivity:	Human
Host:	Goat
Isotype:	IgG
Clonality:	Polyclonal
Immunogen:	Peptide with sequence C-QSMARPAAPFPS, from the C Terminus of the protein sequence according to NP_000374.1, NP_000649.1.
Formulation:	Supplied at 0.5 mg/ml in Tris saline, 0.02% sodium azide, pH7.3 with 0.5% bovine serum albumin.
Concentration:	lot specific
Purification:	Purified from goat serum by ammonium sulphate precipitation followed by antigen affinity chromatography using the immunizing peptide. Supplied at 0.5 mg/ml in Tris saline, 0.02% sodium azide, pH7.3 with 0.5% bovine serum albumin. Aliquot and store at -20°C. Minimize freezing and thawing.
Conjugation:	Unconjugated
Storage:	Store at -20°C as received.
Stability:	Stable for 12 months from date of receipt.
Gene Name:	autoimmune regulator
Database Link:	<a href="#">NP_000374</a> <a href="#">Entrez Gene 326 Human</a> <a href="#">O43918</a>



[View online »](#)

**Background:**

This gene encodes a transcriptional regulator that forms nuclear bodies and interacts with the transcriptional coactivator CBP. At least three splice variant mRNAs products have been described including one which results in a premature stop codon and a transcript predicted to be a candidate for nuclear-mediated decay (NMD). Defects in this gene cause the rare autosomal-recessive systemic autoimmune disease termed autoimmune polyendocrinopathy-candidiasis-ectodermal dystrophy (APECED). [provided by RefSeq]

**Synonyms:**

AIRE1; APECED; APS1; APSI; PGA1

**Note:**

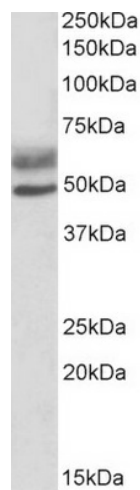
In paraffin embedded Human Thymic medulla shows staining of select nuclei. A customer has reported this antibody was successful in ChIP.

**Protein Families:**

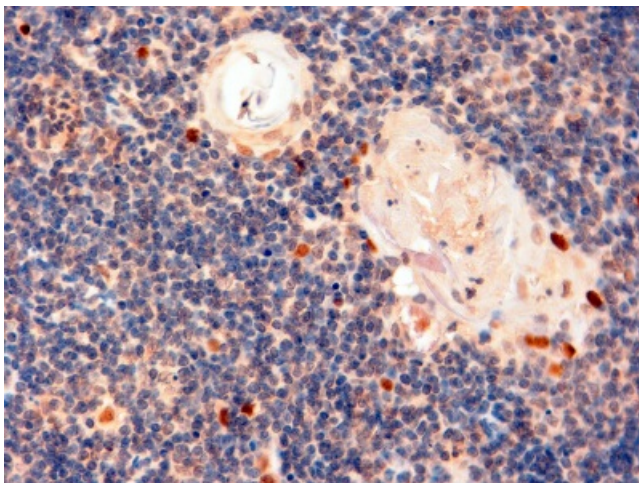
Druggable Genome

**Protein Pathways:**

Primary immunodeficiency, Ubiquitin mediated proteolysis

**Product images:**

TA302805 (0.5ug/ml) staining of Human Lymph lysate (35ug protein in RIPA buffer). Primary incubation was 1 hour. Detected by chemiluminescence.



TA302805 (2ug/ml) staining of paraffin embedded Human Thymus. Steamed antigen retrieval with Tris/EDTA buffer pH 9, HRP-staining.