

Product datasheet for **TA302804**

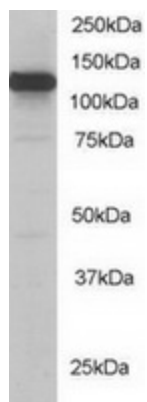
KIF5B Goat Polyclonal Antibody

Product data:

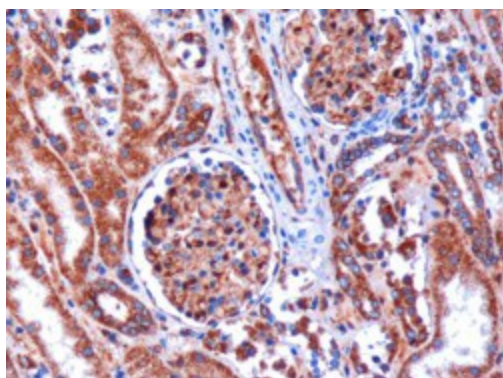
Product Type:	Primary Antibodies
Applications:	IHC, WB
Recommended Dilution:	ELISA: 1:32,000. WB 0.2-1µg/ml. IHC: 1-2µg/ml.
Reactivity:	Human, Dog (Expected from sequence similarity: Mouse, Rat, Cow)
Host:	Goat
Isotype:	IgG
Clonality:	Polyclonal
Immunogen:	Peptide with sequence C-QPVAVRGGGGKQV, from the C Terminus of the protein sequence according to NP_004512.1.
Formulation:	Supplied at 0.5 mg/ml in Tris saline, 0.02% sodium azide, pH7.3 with 0.5% bovine serum albumin.
Purification:	Purified from goat serum by ammonium sulphate precipitation followed by antigen affinity chromatography using the immunizing peptide. Supplied at 0.5 mg/ml in Tris saline, 0.02% sodium azide, pH7.3 with 0.5% bovine serum albumin. Aliquot and store at -20°C. Minimize freezing and thawing.
Conjugation:	Unconjugated
Storage:	Store at -20°C as received.
Stability:	Stable for 12 months from date of receipt.
Gene Name:	kinesin family member 5B
Database Link:	NP_004512 Entrez Gene 16573 Mouse Entrez Gene 117550 Rat Entrez Gene 100855651 Dog Entrez Gene 3799 Human P33176
Background:	Microtubule-dependent motor required for normal distribution of mitochondria and lysosomes (By similarity)
Synonyms:	HEL-S-61; KINH; KNS; KNS1; UKHC
Protein Families:	Druggable Genome



[View online »](#)

Product images:

TA302804 staining (0.2ug/ml) of Human Kidney lysate (RIPA buffer, 35ug total protein per lane). Primary incubated for 1 hour. Detected by western blot using chemiluminescence.



TA302804 (1ug/ml) staining of paraffin embedded Human Kidney. Microwaved antigen retrieval with Tris/EDTA buffer pH9, HRP-staining.