

## Product datasheet for **TA302802**

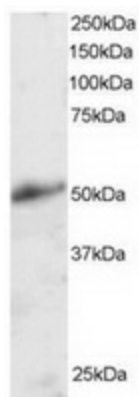
### KLF8 Goat Polyclonal Antibody

#### Product data:

Product Type:	Primary Antibodies
Applications:	WB
Recommended Dilution:	WB: 1-3µg/ml.
Reactivity:	Human (Expected from sequence similarity: Pig)
Host:	Goat
Isotype:	IgG
Clonality:	Polyclonal
Immunogen:	Peptide with sequence VDMDKLINNLEVQ-C, from the N Terminus of the protein sequence according to NP_009181.2.
Formulation:	Supplied at 0.5 mg/ml in Tris saline, 0.02% sodium azide, pH7.3 with 0.5% bovine serum albumin.
Concentration:	lot specific
Purification:	Purified from goat serum by ammonium sulphate precipitation followed by antigen affinity chromatography using the immunizing peptide. Supplied at 0.5 mg/ml in Tris saline, 0.02% sodium azide, pH7.3 with 0.5% bovine serum albumin. Aliquot and store at -20°C. Minimize freezing and thawing.
Conjugation:	Unconjugated
Storage:	Store at -20°C as received.
Stability:	Stable for 12 months from date of receipt.
Gene Name:	Kruppel-like factor 8
Database Link:	<a href="#">NP_009181</a> <a href="#">Entrez Gene 11279 Human</a> <a href="#">O95600</a>
Background:	Transcriptional repressor. Binds to CACCC-boxes promoter elements
Synonyms:	BKLF3; ZNF741
Protein Families:	Transcription Factors



[View online »](#)

**Product images:**

TA302802 staining (2ug/ml) of Human Kidney lysate (RIPA buffer, 30ug total protein per lane). Primary incubated for 1 hour. Detected by western blot using chemiluminescence.