

Product datasheet for **TA302800**

SORBS1 Goat Polyclonal Antibody

Product data:

Product Type:	Primary Antibodies
Applications:	IHC
Recommended Dilution:	ELISA: 1:16,000. WB:2.5µg/ml.
Reactivity:	Human (Expected from sequence similarity: Mouse, Rat, Pig)
Host:	Goat
Isotype:	IgG
Clonality:	Polyclonal
Immunogen:	Peptide with sequence C-GTFPGNYVKPLYL, from the C Terminus of the protein sequence according to NP_006425.2; NP_056200.1; NP_001030126.1; NP_001030127.1; NP_001030128.1; NP_079267.1; NP_001030129.1.
Formulation:	Supplied at 0.5 mg/ml in Tris saline, 0.02% sodium azide, pH7.3 with 0.5% bovine serum albumin.
Concentration:	lot specific
Purification:	Purified from goat serum by ammonium sulphate precipitation followed by antigen affinity chromatography using the immunizing peptide. Supplied at 0.5 mg/ml in Tris saline, 0.02% sodium azide, pH7.3 with 0.5% bovine serum albumin. Aliquot and store at -20°C. Minimize freezing and thawing.
Conjugation:	Unconjugated
Storage:	Store at -20°C as received.
Stability:	Stable for 12 months from date of receipt.
Gene Name:	sorbin and SH3 domain containing 1
Database Link:	NP_001030126 Entrez Gene 20411 Mouse Entrez Gene 686098 Rat Entrez Gene 10580 Human Q9BX66
Background:	Plays a role in tyrosine phosphorylation of CBL by linking CBL to the insulin receptor. Required for insulin-stimulated glucose transport. Involved in formation of actin stress fibers and focal adhesions (By similarity)
Synonyms:	CAP; FLAF2; R85FL; SH3D5; SH3P12; SORB1

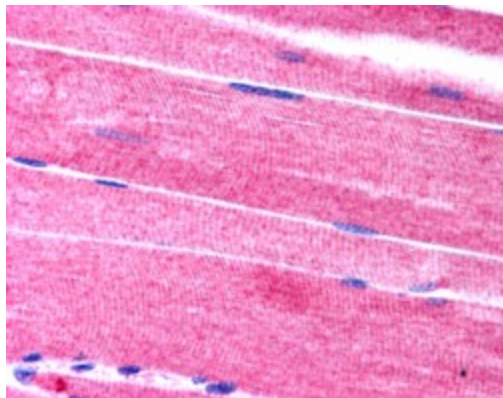


[View online »](#)

Protein Families: Druggable Genome

Protein Pathways: Adherens junction, Insulin signaling pathway, PPAR signaling pathway

Product images:



TA302800 (2.5ug/ml) staining of paraffin embedded human skeletal muscle. Steamed antigen retrieval with citrate buffer pH 6, AP-staining.