

Product datasheet for **TA302797**

CED6 (GULP1) Goat Polyclonal Antibody

Product data:

Product Type:	Primary Antibodies
Applications:	IHC, WB
Recommended Dilution:	ELISA: 1:64,000. WB: 0.2-0.6µg/ml. IHC: 5-10 µg/ml.
Reactivity:	Human (Expected from sequence similarity: Mouse, Rat, Dog)
Host:	Goat
Isotype:	IgG
Clonality:	Polyclonal
Immunogen:	Peptide with sequence EGTVFCLDPLDSRC, from the C Terminus of the protein sequence according to NP_057399.1.
Formulation:	Supplied at 0.5 mg/ml in Tris saline, 0.02% sodium azide, pH7.3 with 0.5% bovine serum albumin.
Concentration:	lot specific
Purification:	Purified from goat serum by ammonium sulphate precipitation followed by antigen affinity chromatography using the immunizing peptide. Supplied at 0.5 mg/ml in Tris saline, 0.02% sodium azide, pH7.3 with 0.5% bovine serum albumin. Aliquot and store at -20°C. Minimize freezing and thawing.
Conjugation:	Unconjugated
Storage:	Store at -20°C as received.
Stability:	Stable for 12 months from date of receipt.
Gene Name:	GULP, engulfment adaptor PTB domain containing 1
Database Link:	NP_057399 Entrez Gene 70676 Mouse Entrez Gene 314543 Rat Entrez Gene 478834 Dog Entrez Gene 51454 Human Q9UBP9
Background:	The prompt clearance of cells undergoing apoptosis is critical during embryonic development, normal tissue turnover, inflammation, and autoimmunity. CED6 is an evolutionarily conserved adaptor protein required for efficient engulfment of apoptotic cells by phagocytes. [supplied by OMIM]

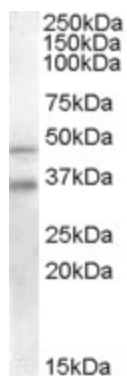


[View online »](#)

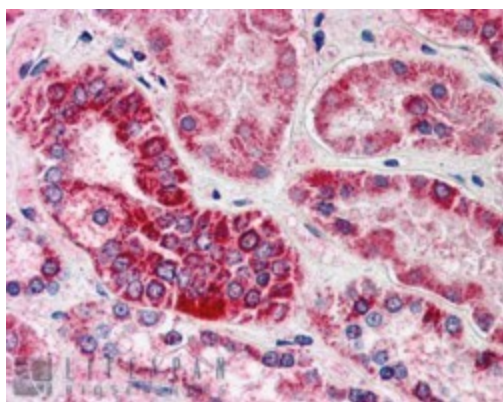
Synonyms: CED-6; CED6; GULP

Protein Families: Druggable Genome

Product images:



TA302797 staining (0.2ug/ml) of Human Placenta lysate (RIPA buffer, 30ug total protein per lane). Primary incubated for 1 hour. Detected by western blot using chemiluminescence.



TA302797 (5ug/ml) staining of paraffin embedded Human Kidney. Steamed antigen retrieval with citrate buffer pH 6, AP-staining.