

Product datasheet for **TA302795**

ARPC1B Goat Polyclonal Antibody

Product data:

Product Type:	Primary Antibodies
Applications:	WB
Recommended Dilution:	ELISA: 1:32,000. WB: 2-4µg/ml.
Reactivity:	Human (Expected from sequence similarity: Mouse, Rat, Dog, Pig, Cow)
Host:	Goat
Isotype:	IgG
Clonality:	Polyclonal
Immunogen:	Peptide with sequence AYHSFLVEPISCH, from the N Terminus of the protein sequence according to NP_005711.
Formulation:	Supplied at 0.5 mg/ml in Tris saline, 0.02% sodium azide, pH7.3 with 0.5% bovine serum albumin.
Concentration:	lot specific
Purification:	Purified from goat serum by ammonium sulphate precipitation followed by antigen affinity chromatography using the immunizing peptide. Supplied at 0.5 mg/ml in Tris saline, 0.02% sodium azide, pH7.3 with 0.5% bovine serum albumin. Aliquot and store at -20°C. Minimize freezing and thawing.
Conjugation:	Unconjugated
Storage:	Store at -20°C as received.
Stability:	Stable for 12 months from date of receipt.
Gene Name:	actin related protein 2/3 complex subunit 1B
Database Link:	NP_005711 Entrez Gene 11867 MouseEntrez Gene 54227 RatEntrez Gene 479744 DogEntrez Gene 10095 Human O15143



[View online »](#)

Background:

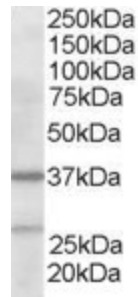
This gene encodes one of seven subunits of the human Arp2/3 protein complex. This subunit is a member of the SOP2 family of proteins and is most similar to the protein encoded by gene ARPC1A. The similarity between these two proteins suggests that they both may function as p41 subunit of the human Arp2/3 complex that has been implicated in the control of actin polymerization in cells. It is possible that the p41 subunit is involved in assembling and maintaining the structure of the Arp2/3 complex. Multiple versions of the p41 subunit may adapt the functions of the complex to different cell types or developmental stages.

Synonyms:

ARC41; p40-ARC; p41-ARC

Protein Pathways:

Fc gamma R-mediated phagocytosis, Pathogenic Escherichia coli infection, Regulation of actin cytoskeleton

Product images:

TA302795 staining (2ug/ml) of Human Liver lysate (RIPA buffer, 35ug total protein per lane). Primary incubated for 1 hour. Detected by western blot using chemiluminescence.