

Product datasheet for **TA302788**

Tfeb Goat Polyclonal Antibody

Product data:

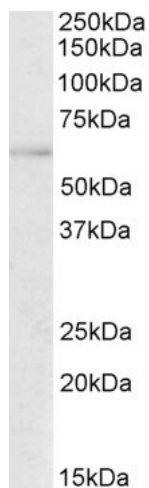
Product Type:	Primary Antibodies
Applications:	IHC, WB
Recommended Dilution:	ELISA: 1:64,000; WB: 0.3-1ug/ml
Reactivity:	Human (Expected from sequence similarity: Mouse, Rat, Dog, Pig, Cow)
Host:	Goat
Isotype:	IgG
Clonality:	Polyclonal
Immunogen:	Peptide with sequence ASRIGLRMQLMRE-C, from the N Terminus of the protein sequence according to NP_009093.
Formulation:	Supplied at 0.5 mg/ml in Tris saline, 0.02% sodium azide, pH7.3 with 0.5% bovine serum albumin.
Purification:	Purified from goat serum by ammonium sulphate precipitation followed by antigen affinity chromatography using the immunizing peptide. Supplied at 0.5 mg/ml in Tris saline, 0.02% sodium azide, pH7.3 with 0.5% bovine serum albumin. Aliquot and store at -20°C. Minimize freezing and thawing.
Conjugation:	Unconjugated
Storage:	Store at -20°C as received.
Stability:	Stable for 12 months from date of receipt.
Gene Name:	transcription factor EB
Database Link:	NP_035679 Entrez Gene 7942 Human Entrez Gene 316214 Rat Entrez Gene 609046 Dog Entrez Gene 21425 Mouse Q9R210
Background:	Probable transcription factor binds to the USF/MLTF site and probably recognizes E-box sequences in the heavy-chain immunoglobulin enhancer
Synonyms:	ALPHATFEB; BHLHE35; OTTHUMP00000043540; TCFEB



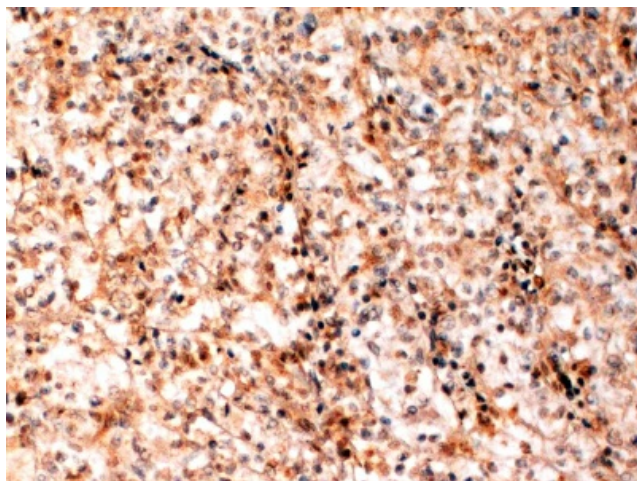
[View online »](#)

Note: In paraffin embedded Human Kidney cancer shows strong nuclear staining of invading cells. This antibody was confirmed in CHIP on SK-MEL-5 cells (The result was obtained from a previous batch (different goat)).

Product images:



TA302788 (0.5ug/ml) staining of Human Thymus lysate (35ug protein in RIPA buffer). Primary incubation was 1 hour. Detected by chemiluminescence.



TA302788 (2ug/ml) staining of paraffin embedded Human Kidney cancer. Steamed antigen retrieval with citrate buffer pH 6, HRP-staining.