

Product datasheet for **TA302780**

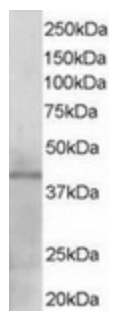
KLF3 Goat Polyclonal Antibody

Product data:

Product Type:	Primary Antibodies
Applications:	WB
Recommended Dilution:	ELISA: 1:32,000. WB: 1-3µg/ml.
Reactivity:	Human (Expected from sequence similarity: Mouse, Rat, Dog, Pig, Cow)
Host:	Goat
Isotype:	IgG
Clonality:	Polyclonal
Immunogen:	Peptide with sequence LMFDPVPVKQEAMD-C, from the N Terminus of the protein sequence according to NP_057615.
Formulation:	Supplied at 0.5 mg/ml in Tris saline, 0.02% sodium azide, pH7.3 with 0.5% bovine serum albumin.
Concentration:	lot specific
Purification:	Purified from goat serum by ammonium sulphate precipitation followed by antigen affinity chromatography using the immunizing peptide. Supplied at 0.5 mg/ml in Tris saline, 0.02% sodium azide, pH7.3 with 0.5% bovine serum albumin. Aliquot and store at -20°C. Minimize freezing and thawing.
Conjugation:	Unconjugated
Storage:	Store at -20°C as received.
Stability:	Stable for 12 months from date of receipt.
Gene Name:	Kruppel-like factor 3 (basic)
Database Link:	NP_057615 Entrez Gene 16599 MouseEntrez Gene 114845 RatEntrez Gene 488836 DogEntrez Gene 51274 Human P57682
Background:	Binds to the CACCC box. May play a role in hematopoiesis (By similarity)
Synonyms:	BKLF
Protein Families:	Transcription Factors



[View online »](#)

Product images:

TA302780 staining (1ug/ml) of Human Heart lysate (RIPA buffer, 35ug total protein per lane). Primary incubated for 1 hour. Detected by western blot using chemiluminescence.