

Product datasheet for **TA302779**

ADAM8 Goat Polyclonal Antibody

Product data:

Product Type:	Primary Antibodies
Applications:	PEP-ELISA, WB
Recommended Dilution:	WB: 1-3µg/ml.
Reactivity:	Human
Host:	Goat
Isotype:	IgG
Clonality:	Polyclonal
Immunogen:	Peptide with sequence C-QRKQGAGAPTAP, from the C Terminus of the protein sequence according to NP_001100.
Formulation:	Supplied at 0.5 mg/ml in Tris saline, 0.02% sodium azide, pH7.3 with 0.5% bovine serum albumin.
Concentration:	lot specific
Purification:	Purified from goat serum by ammonium sulphate precipitation followed by antigen affinity chromatography using the immunizing peptide. Supplied at 0.5 mg/ml in Tris saline, 0.02% sodium azide, pH7.3 with 0.5% bovine serum albumin. Aliquot and store at -20°C. Minimize freezing and thawing.
Conjugation:	Unconjugated
Storage:	Store at -20°C as received.
Stability:	Stable for 12 months from date of receipt.
Gene Name:	ADAM metallopeptidase domain 8
Database Link:	NP_001100 Entrez Gene 101 Human P78325



[View online »](#)

Background:

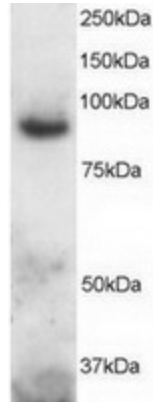
This gene encodes a member of the ADAM (a disintegrin and metalloprotease domain) family. Members of this family are membrane-anchored proteins structurally related to snake venom disintegrins, and have been implicated in a variety of biological processes involving cell-cell and cell-matrix interactions, including fertilization, muscle development, and neurogenesis. The protein encoded by this gene may be involved in cell adhesion during neurodegeneration. [provided by RefSeq]

Synonyms:

CD156; CD156a; MS2

Protein Families:

Druggable Genome, Transmembrane

Product images:

TA302779 staining (2ug/ml) of Human Brain lysate (RIPA buffer, 30ug total protein per lane). Primary incubated for 1 hour. Detected by western blot using chemiluminescence.