

## Product datasheet for **TA302777**

### **AIBZIP (CREB3L4) Goat Polyclonal Antibody**

#### **Product data:**

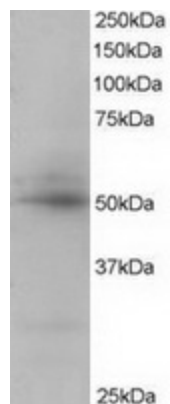
<b>Product Type:</b>	Primary Antibodies
<b>Applications:</b>	IHC, WB
<b>Recommended Dilution:</b>	ELISA: 1:32,000. WB 0.5-2µg/ml. IHC: 2-4µg/ml.
<b>Reactivity:</b>	Human
<b>Host:</b>	Goat
<b>Isotype:</b>	IgG
<b>Clonality:</b>	Polyclonal
<b>Immunogen:</b>	Peptide with sequence C-PSGRIRSVLHADEM, from the C Terminus of the protein sequence according to NP_570968.
<b>Formulation:</b>	Supplied at 0.5 mg/ml in Tris saline, 0.02% sodium azide, pH7.3 with 0.5% bovine serum albumin.
<b>Concentration:</b>	lot specific
<b>Purification:</b>	Purified from goat serum by ammonium sulphate precipitation followed by antigen affinity chromatography using the immunizing peptide. Supplied at 0.5 mg/ml in Tris saline, 0.02% sodium azide, pH7.3 with 0.5% bovine serum albumin. Aliquot and store at -20°C. Minimize freezing and thawing.
<b>Conjugation:</b>	Unconjugated
<b>Storage:</b>	Store at -20°C as received.
<b>Stability:</b>	Stable for 12 months from date of receipt.
<b>Gene Name:</b>	cAMP responsive element binding protein 3-like 4
<b>Database Link:</b>	<a href="#">NP_570968</a> <a href="#">Entrez Gene 148327 Human</a> <a href="#">Q8TEY5</a>
<b>Background:</b>	cAMP response element-binding (CREB) proteins are a family of mammalian transcription activators. For further background information on CREB proteins, see CREB1 (MIM 123810). [supplied by OMIM]
<b>Synonyms:</b>	AIBZIP; ATCE1; CREB3; CREB4; hJAL; JAL
<b>Protein Families:</b>	Transcription Factors



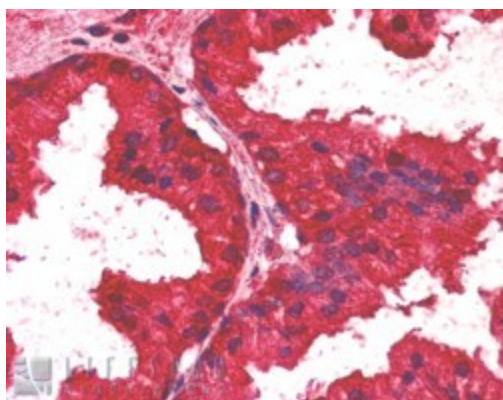
[View online »](#)

Protein Pathways: Huntington's disease, Melanogenesis, Prostate cancer

### Product images:



TA302777 staining (0.5ug/ml) of Human Placenta lysate (RIPA buffer, 35ug total protein per lane). Primary incubated for 1 hour. Detected by western blot using chemiluminescence.



TA302777 (2.5ug/ml) staining of paraffin embedded Human Prostate. Steamed antigen retrieval with citrate buffer pH 6, AP-staining.