

## Product datasheet for **TA302768**

### VAV2 Goat Polyclonal Antibody

#### Product data:

Product Type:	Primary Antibodies
Applications:	WB
Recommended Dilution:	ELISA: 1:32,000. WB: 1-1.5µg/ml.
Reactivity:	Human (Expected from sequence similarity: Mouse, Rat, Dog, Pig)
Host:	Goat
Isotype:	IgG
Clonality:	Polyclonal
Immunogen:	Peptide with sequence ETEAKYYRTLEDIEC, from the internal region of the protein sequence according to NP_003362.
Formulation:	Supplied at 0.5 mg/ml in Tris saline, 0.02% sodium azide, pH7.3 with 0.5% bovine serum albumin.
Concentration:	lot specific
Purification:	Purified from goat serum by ammonium sulphate precipitation followed by antigen affinity chromatography using the immunizing peptide. Supplied at 0.5 mg/ml in Tris saline, 0.02% sodium azide, pH7.3 with 0.5% bovine serum albumin. Aliquot and store at -20°C. Minimize freezing and thawing.
Conjugation:	Unconjugated
Storage:	Store at -20°C as received.
Stability:	Stable for 12 months from date of receipt.
Gene Name:	vav guanine nucleotide exchange factor 2
Database Link:	<a href="#">NP_001127870</a> <a href="#">Entrez Gene 22325 MouseEntrez Gene 296603 RatEntrez Gene 608060 DogEntrez Gene 7410 Human P52735</a>
Background:	VAV2 is the second member of the VAV guanine nucleotide exchange factor family of oncogenes. Unlike VAV1, which is expressed exclusively in hematopoietic cells, VAV2 transcripts were found in most tissues. Alternatively spliced transcript variants encoding different isoforms have been found for this gene. [provided by RefSeq]



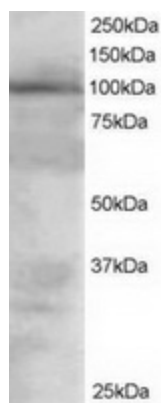
[View online »](#)

**Synonyms:** VAV-2

**Protein Families:** Druggable Genome

**Protein Pathways:** B cell receptor signaling pathway, Chemokine signaling pathway, Fc epsilon RI signaling pathway, Fc gamma R-mediated phagocytosis, Focal adhesion, Leukocyte transendothelial migration, Natural killer cell mediated cytotoxicity, Regulation of actin cytoskeleton, T cell receptor signaling pathway

**Product images:**



TA302768 staining (1.5ug/ml) of 293 lysate (RIPA buffer, 30ug total protein per lane). Primary incubated for 1 hour. Detected by western blot using chemiluminescence.