

Product datasheet for **TA302765**

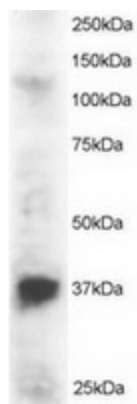
PINX1 Goat Polyclonal Antibody

Product data:

Product Type:	Primary Antibodies
Applications:	WB
Recommended Dilution:	WB: 1-3µg/ml.
Reactivity:	Human (Expected from sequence similarity: Mouse, Rat, Pig, Dog, Cow)
Host:	Goat
Isotype:	IgG
Clonality:	Polyclonal
Immunogen:	Peptide with sequence SMLAERRRQKWAV-C, from the N Terminus of the protein sequence according to NP_060354.4.
Formulation:	Supplied at 0.5 mg/ml in Tris saline, 0.02% sodium azide, pH7.3 with 0.5% bovine serum albumin.
Concentration:	lot specific
Purification:	Purified from goat serum by ammonium sulphate precipitation followed by antigen affinity chromatography using the immunizing peptide. Supplied at 0.5 mg/ml in Tris saline, 0.02% sodium azide, pH7.3 with 0.5% bovine serum albumin. Aliquot and store at -20°C. Minimize freezing and thawing.
Conjugation:	Unconjugated
Storage:	Store at -20°C as received.
Stability:	Stable for 12 months from date of receipt.
Gene Name:	PIN2/TERF1 interacting, telomerase inhibitor 1
Database Link:	NP_060354 Entrez Gene 72400 Mouse Entrez Gene 305963 Rat Entrez Gene 100856757 Dog Entrez Gene 54984 Human Q96BK5
Background:	Inhibits telomerase activity. May inhibit cell proliferation and act as tumor suppressor
Synonyms:	LPTL; LPTS



[View online »](#)

Product images:

TA302765 staining (2ug/ml) of Jurkat lysate (RIPA buffer, 30ug total protein per lane). Primary incubated for 1 hour. Detected by western blot using chemiluminescence.