

Product datasheet for **TA302763**

RAC2 Goat Polyclonal Antibody

Product data:

Product Type:	Primary Antibodies
Applications:	IHC, WB
Recommended Dilution:	ELISA: 1:32,000. WB: 1-3µg/ml. IHC: 0.3ug/ml.
Reactivity:	Human (Expected from sequence similarity: Mouse, Rat)
Host:	Goat
Isotype:	IgG
Clonality:	Polyclonal
Immunogen:	Peptide with sequence PQPTRQQKRACSLI, from the C Terminus of the protein sequence according to NP_002863.1.
Formulation:	Supplied at 0.5 mg/ml in Tris saline, 0.02% sodium azide, pH7.3 with 0.5% bovine serum albumin.
Concentration:	lot specific
Purification:	Purified from goat serum by ammonium sulphate precipitation followed by antigen affinity chromatography using the immunizing peptide. Supplied at 0.5 mg/ml in Tris saline, 0.02% sodium azide, pH7.3 with 0.5% bovine serum albumin. Aliquot and store at -20°C. Minimize freezing and thawing.
Conjugation:	Unconjugated
Storage:	Store at -20°C as received.
Stability:	Stable for 12 months from date of receipt.
Gene Name:	ras-related C3 botulinum toxin substrate 2 (rho family, small GTP binding protein Rac2)
Database Link:	NP_002863 Entrez Gene 19354 Mouse Entrez Gene 366957 Rat Entrez Gene 5880 Human P15153
Background:	The protein encoded by this gene is a GTPase which belongs to the RAS superfamily of small GTP-binding proteins. Members of this superfamily appear to regulate a diverse array of cellular events, including the control of cell growth, cytoskeletal reorganization, and the activation of protein kinases. [provided by RefSeq]
Synonyms:	EN-7; Gx; HSPC022; p21-Rac2

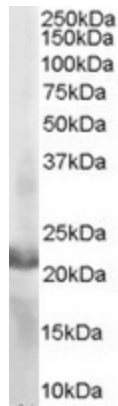


[View online »](#)

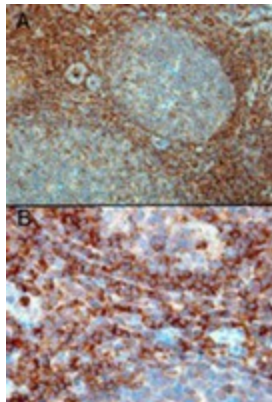
Protein Families: Druggable Genome

Protein Pathways: Adherens junction, Axon guidance, B cell receptor signaling pathway, Chemokine signaling pathway, Colorectal cancer, Fc epsilon RI signaling pathway, Fc gamma R-mediated phagocytosis, Focal adhesion, Leukocyte transendothelial migration, MAPK signaling pathway, Natural killer cell mediated cytotoxicity, Pancreatic cancer, Pathways in cancer, Regulation of actin cytoskeleton, VEGF signaling pathway, Viral myocarditis, Wnt signaling pathway

Product images:



TA302763 staining (2ug/ml) of MOLT-4 lysate (RIPA buffer, 35ug total protein per lane). Primary incubated for 1 hour. Detected by western blot using chemiluminescence.



TA302763 retrieval with Tris/EDTA buffer pH9, HRP-staining. A) Strong staining in the interfollicular area and mantle zone. B) Positive cells in the interfollicular area.