

## Product datasheet for **TA302760**

### ELMO2 Goat Polyclonal Antibody

#### Product data:

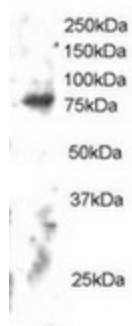
Product Type:	Primary Antibodies
Applications:	WB
Recommended Dilution:	WB: 1-3µg/ml.
Reactivity:	Human (Expected from sequence similarity: Mouse, Rat, Dog, Pig, Cow)
Host:	Goat
Isotype:	IgG
Clonality:	Polyclonal
Immunogen:	Peptide with sequence C-PKEPSSYDFVYHYG, from the C Terminus of the protein sequence according to NP_877496.1; NP_573403.1.
Formulation:	Supplied at 0.5 mg/ml in Tris saline, 0.02% sodium azide, pH7.3 with 0.5% bovine serum albumin.
Concentration:	lot specific
Purification:	Purified from goat serum by ammonium sulphate precipitation followed by antigen affinity chromatography using the immunizing peptide. Supplied at 0.5 mg/ml in Tris saline, 0.02% sodium azide, pH7.3 with 0.5% bovine serum albumin. Aliquot and store at -20°C. Minimize freezing and thawing.
Conjugation:	Unconjugated
Storage:	Store at -20°C as received.
Stability:	Stable for 12 months from date of receipt.
Gene Name:	engulfment and cell motility 2
Database Link:	<a href="#">NP_573403</a> <a href="#">Entrez Gene 140579 MouseEntrez Gene 362271 RatEntrez Gene 477251 DogEntrez Gene 63916 Human</a> <a href="#">Q96JJ3</a>
Background:	The protein encoded by this gene interacts with the dedicator of cyto-kinesis 1 protein. Similarity to a C. elegans protein suggests that this protein may function in phagocytosis of apoptotic cells and in cell migration. Alternative splicing results in multiple transcript variants encoding the same protein. [provided by RefSeq]



[View online »](#)

Synonyms: CED-12; CED12; ELMO-2

### Product images:



TA302760 staining (2ug/ml) of Human Brain lysate (RIPA buffer, 30ug total protein per lane). Primary incubated for 12 hour. Detected by western blot using chemiluminescence.