

## Product datasheet for **TA302758**

### Numb Goat Polyclonal Antibody

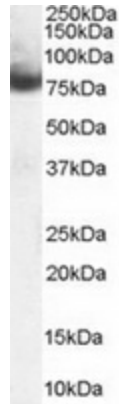
#### Product data:

Product Type:	Primary Antibodies
Applications:	WB
Recommended Dilution:	ELISA: 1:16,000. WB: 0.3-1.0 µg/ml.
Reactivity:	Human, Mouse (Expected from sequence similarity: Dog, Cow)
Host:	Goat
Isotype:	IgG
Clonality:	Polyclonal
Immunogen:	Peptide with sequence C-PFSSDLQKTFEIEL, from the C Terminus of the protein sequence according to NP_001005743.1; 001005744.1; NP_003735; NP_001005745.1.
Formulation:	Supplied at 0.5 mg/ml in Tris saline, 0.02% sodium azide, pH7.3 with 0.5% bovine serum albumin.
Purification:	Purified from goat serum by ammonium sulphate precipitation followed by antigen affinity chromatography using the immunizing peptide. Supplied at 0.5 mg/ml in Tris saline, 0.02% sodium azide, pH7.3 with 0.5% bovine serum albumin. Aliquot and store at -20°C. Minimize freezing and thawing.
Conjugation:	Unconjugated
Storage:	Store at -20°C as received.
Stability:	Stable for 12 months from date of receipt.
Gene Name:	numb homolog (Drosophila)
Database Link:	<a href="#">NP_035079</a> <a href="#">Entrez Gene 8650 Human</a> <a href="#">Entrez Gene 480381 Dog</a> <a href="#">Entrez Gene 18222 Mouse</a> <a href="#">Q9QZS3</a>
Background:	The protein encoded by this gene plays a role in the determination of cell fates during development. The encoded protein, whose degradation is induced in a proteasome-dependent manner by MDM2, is a membrane-bound protein that has been shown to associate with EPS15, LNX1, and NOTCH1. Four transcript variants encoding different isoforms have been found for this gene. [provided by RefSeq]
Synonyms:	h-Numb; S171



[View online »](#)

Product images:



TA302758 staining (0.3ug/ml) of Mouse Brain lysate (RIPA buffer, 30ug total protein per lane). Primary incubated for 1 hour. Detected by western blot using chemiluminescence.

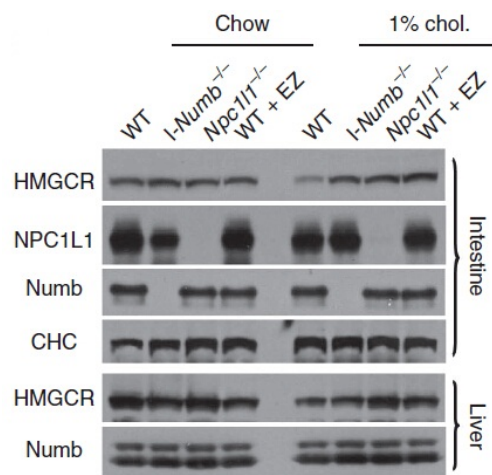


Figure from citation: Western Blot of NUMB protein level by using anti-NUMB antibody in small intestine and liver of the mice. Dilution: 1:1000 [View Citation](#)