

Product datasheet for **TA302753**

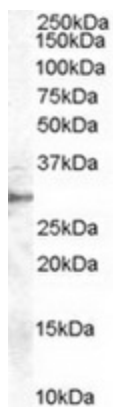
DDAH2 Goat Polyclonal Antibody

Product data:

Product Type:	Primary Antibodies
Applications:	WB
Recommended Dilution:	ELISA: 1:2,000. WB: 1-3µg/ml.
Reactivity:	Human, Mouse (Expected from sequence similarity: Rat, Dog, Cow)
Host:	Goat
Isotype:	IgG
Clonality:	Polyclonal
Immunogen:	Peptide with sequence SSLCLVLSTRPHS, from the C Terminus of the protein sequence according to NP_039268.1.
Formulation:	Supplied at 0.5 mg/ml in Tris saline, 0.02% sodium azide, pH7.3 with 0.5% bovine serum albumin.
Concentration:	lot specific
Purification:	Purified from goat serum by ammonium sulphate precipitation followed by antigen affinity chromatography using the immunizing peptide. Supplied at 0.5 mg/ml in Tris saline, 0.02% sodium azide, pH7.3 with 0.5% bovine serum albumin. Aliquot and store at -20°C. Minimize freezing and thawing.
Conjugation:	Unconjugated
Storage:	Store at -20°C as received.
Stability:	Stable for 12 months from date of receipt.
Gene Name:	dimethylarginine dimethylaminohydrolase 2
Database Link:	NP_039268 Entrez Gene 51793 MouseEntrez Gene 294239 RatEntrez Gene 474846 DogEntrez Gene 23564 Human O95865
Background:	This gene belongs to the dimethylarginine dimethylaminohydrolase (DDAH) gene family. The encoded enzyme plays a role in nitric oxide generation by regulating cellular concentrations of methylarginines, which in turn inhibit nitric oxide synthase activity. [provided by RefSeq]
Synonyms:	DDAH; DDAHII; G6a; HEL-S-277; NG30



[View online »](#)

Product images:

TA302753 staining (1ug/ml) of human heart extracts (RIPA buffer, 35ug total protein per lane). Primary incubated for 1 hour. Detected by western blot using chemiluminescence.