

Product datasheet for **TA302752**

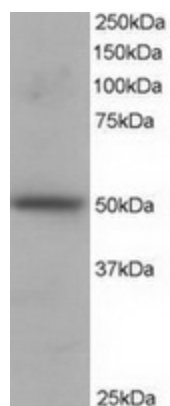
PACSIN3 Goat Polyclonal Antibody

Product data:

Product Type:	Primary Antibodies
Applications:	WB
Recommended Dilution:	ELISA: 1:16,000. WB: 1-3µg/ml.
Reactivity:	Human (Expected from sequence similarity: Mouse, Rat)
Host:	Goat
Isotype:	IgG
Clonality:	Polyclonal
Immunogen:	Peptide with sequence APEEDAGGEALGGS-C, from the N Terminus of the protein sequence according to NP_057307.2.
Formulation:	Supplied at 0.5 mg/ml in Tris saline, 0.02% sodium azide, pH7.3 with 0.5% bovine serum albumin.
Purification:	Purified from goat serum by ammonium sulphate precipitation followed by antigen affinity chromatography using the immunizing peptide. Supplied at 0.5 mg/ml in Tris saline, 0.02% sodium azide, pH7.3 with 0.5% bovine serum albumin. Aliquot and store at -20°C. Minimize freezing and thawing.
Conjugation:	Unconjugated
Storage:	Store at -20°C as received.
Stability:	Stable for 12 months from date of receipt.
Gene Name:	protein kinase C and casein kinase substrate in neurons 3
Database Link:	NP_057307 Entrez Gene 80708 Mouse Entrez Gene 311187 Rat Entrez Gene 29763 Human Q9UKS6
Background:	May play a role in vesicle formation and transport
Synonyms:	SDPIII
Protein Families:	Druggable Genome



[View online »](#)

Product images:

TA302752 staining (1 ug/ml) of H460 lysate (RIPA buffer, 35ug total protein per lane). Primary incubated for 1 hour. Detected by western blot using chemiluminescence.