

Product datasheet for **TA302751**

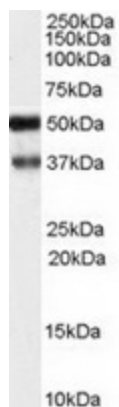
PACSIN1 Goat Polyclonal Antibody

Product data:

Product Type:	Primary Antibodies
Applications:	WB
Recommended Dilution:	ELISA: 1:32,000. WB: 0.03-0.1µg/ml.
Reactivity:	Human (Expected from sequence similarity: Dog, Pig, Cow)
Host:	Goat
Isotype:	IgG
Clonality:	Polyclonal
Immunogen:	Peptide with sequence SSSYDEASLAPEET-C, from the N Terminus of the protein sequence according to NP_065855.1.
Formulation:	Supplied at 0.5 mg/ml in Tris saline, 0.02% sodium azide, pH7.3 with 0.5% bovine serum albumin.
Concentration:	lot specific
Purification:	Purified from goat serum by ammonium sulphate precipitation followed by antigen affinity chromatography using the immunizing peptide. Supplied at 0.5 mg/ml in Tris saline, 0.02% sodium azide, pH7.3 with 0.5% bovine serum albumin. Aliquot and store at -20°C. Minimize freezing and thawing.
Conjugation:	Unconjugated
Storage:	Store at -20°C as received.
Stability:	Stable for 12 months from date of receipt.
Gene Name:	protein kinase C and casein kinase substrate in neurons 1
Database Link:	NP_065855 Entrez Gene 608087 Dog Entrez Gene 29993 Human Q9BY11
Background:	May play a role in vesicle formation and transport
Synonyms:	SDPI
Protein Families:	Druggable Genome



[View online »](#)

Product images:

TA302751 (1ug/ml) staining of Human Brain (hippocampus) lysate (35ug protein in RIPA buffer). Primary incubation was 1 hour. Detected by chemiluminescence.