

## Product datasheet for **TA302746**

### LASP1 Goat Polyclonal Antibody

#### Product data:

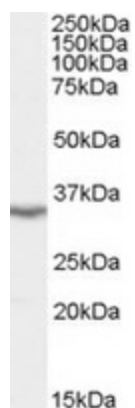
Product Type:	Primary Antibodies
Applications:	WB
Recommended Dilution:	ELISA: 1:128,000. WB: 0.1-0.3µg/ml.
Reactivity:	Human (Expected from sequence similarity: Mouse, Rat, Dog, Pig)
Host:	Goat
Isotype:	IgG
Clonality:	Polyclonal
Immunogen:	Peptide with sequence NPNCARCGKIVYP, from the N Terminus of the protein sequence according to NP_006139.1.
Formulation:	Supplied at 0.5 mg/ml in Tris saline, 0.02% sodium azide, pH7.3 with 0.5% bovine serum albumin.
Concentration:	lot specific
Purification:	Purified from goat serum by ammonium sulphate precipitation followed by antigen affinity chromatography using the immunizing peptide. Supplied at 0.5 mg/ml in Tris saline, 0.02% sodium azide, pH7.3 with 0.5% bovine serum albumin. Aliquot and store at -20°C. Minimize freezing and thawing.
Conjugation:	Unconjugated
Storage:	Store at -20°C as received.
Stability:	Stable for 12 months from date of receipt.
Gene Name:	LIM and SH3 protein 1
Database Link:	<a href="#">NP_006139</a> <a href="#">Entrez Gene 16796 MouseEntrez Gene 29278 RatEntrez Gene 608624 DogEntrez Gene 3927 Human Q14847</a>
Background:	This gene encodes a member of a LIM protein subfamily characterized by a LIM motif and a domain of Src homology region 3. The encoded protein functions as an actin-binding protein and possibly in cytoskeletal organization. [provided by RefSeq]
Synonyms:	Lasp-1; MLN50



[View online »](#)

Protein Families: Druggable Genome

### Product images:



TA302746 staining (0.1ug/ml) of Human Brain (Cerebellum) extracts (RIPA buffer, 35ug total protein per lane). Primary incubated for 1 hour. Detected by western blot using chemiluminescence.