

Product datasheet for **TA302734**

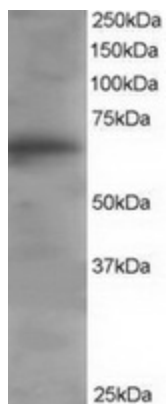
DOK3 Goat Polyclonal Antibody

Product data:

Product Type:	Primary Antibodies
Applications:	WB
Recommended Dilution:	ELISA: 1:32,000. WB: 1-3µg/ml.
Reactivity:	Human (Expected from sequence similarity: Mouse, Rat, Cow)
Host:	Goat
Isotype:	IgG
Clonality:	Polyclonal
Immunogen:	Peptide with sequence TRERRKGPAPCDRP, from the C Terminus of the protein sequence according to NP_079148.1.
Formulation:	Supplied at 0.5 mg/ml in Tris saline, 0.02% sodium azide, pH7.3 with 0.5% bovine serum albumin.
Concentration:	lot specific
Purification:	Purified from goat serum by ammonium sulphate precipitation followed by antigen affinity chromatography using the immunizing peptide. Supplied at 0.5 mg/ml in Tris saline, 0.02% sodium azide, pH7.3 with 0.5% bovine serum albumin. Aliquot and store at -20°C. Minimize freezing and thawing.
Conjugation:	Unconjugated
Storage:	Store at -20°C as received.
Stability:	Stable for 12 months from date of receipt.
Gene Name:	docking protein 3
Database Link:	NP_001138347 Entrez Gene 27261 Mouse Entrez Gene 306760 Rat Entrez Gene 79930 Human Q7L591
Background:	Docking proteins interact with receptor tyrosine kinases and mediate particular biological responses. DOK3 is a negative regulator of JNK signaling in B-cells through interaction with INPP5D/SHIP1. May modulate Abl function (By similarity)
Synonyms:	DOKL
Protein Families:	Druggable Genome



[View online »](#)

Product images:

TA302734 staining (1ug/ml) of Human PBMC lysate (RIPA buffer, 35ug total protein per lane). Primary incubated for 1 hour. Detected by western blot using chemiluminescence.