

## Product datasheet for **TA302733**

### **BPOZ (ABTB1) Goat Polyclonal Antibody**

#### **Product data:**

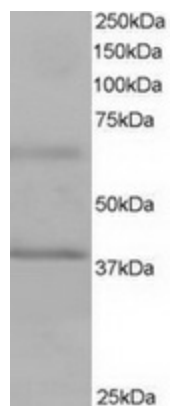
<b>Product Type:</b>	Primary Antibodies
<b>Applications:</b>	WB
<b>Recommended Dilution:</b>	ELISA: 1:32,000. WB: 1-3µg/ml.
<b>Reactivity:</b>	Human (Expected from sequence similarity: Mouse, Rat, Dog)
<b>Host:</b>	Goat
<b>Isotype:</b>	IgG
<b>Clonality:</b>	Polyclonal
<b>Immunogen:</b>	Peptide with sequence RALEDLLVSIQLDC, from the C Terminus of the protein sequence according to NP_115937.
<b>Formulation:</b>	Supplied at 0.5 mg/ml in Tris saline, 0.02% sodium azide, pH7.3 with 0.5% bovine serum albumin.
<b>Concentration:</b>	lot specific
<b>Purification:</b>	Purified from goat serum by ammonium sulphate precipitation followed by antigen affinity chromatography using the immunizing peptide. Supplied at 0.5 mg/ml in Tris saline, 0.02% sodium azide, pH7.3 with 0.5% bovine serum albumin. Aliquot and store at -20°C. Minimize freezing and thawing.
<b>Conjugation:</b>	Unconjugated
<b>Storage:</b>	Store at -20°C as received.
<b>Stability:</b>	Stable for 12 months from date of receipt.
<b>Gene Name:</b>	ankyrin repeat and BTB domain containing 1
<b>Database Link:</b>	<a href="#">NP_115937</a> <a href="#">Entrez Gene 80283 Mouse</a> <a href="#">Entrez Gene 297432 Rat</a> <a href="#">Entrez Gene 609299 Dog</a> <a href="#">Entrez Gene 80325 Human</a> <a href="#">Q969K4</a>
<b>Background:</b>	This gene encodes a protein with an ankyrin repeat region and two BTB/POZ domains, which are thought to be involved in protein-protein interactions. Expression of this gene is activated by the phosphatase and tensin homolog, a tumor suppressor. Alternate splicing results in three transcript variants encoding different isoforms.



[View online »](#)

Synonyms: BPOZ; BTB3; BTBD21; EF1ABP; PP2259

### Product images:



TA302733 staining (1ug/ml) of Human Heart lysate (RIPA buffer, 35ug total protein per lane). Primary incubated for 1 hour. Detected by western blot using chemiluminescence.