

Product datasheet for **TA302732**

ATF2 Goat Polyclonal Antibody

Product data:

Product Type:	Primary Antibodies
Applications:	WB
Recommended Dilution:	WB: 0.3-1ug/mL
Reactivity:	Human (Expected from sequence similarity: Rat, Dog, Cow)
Host:	Goat
Isotype:	IgG
Clonality:	Polyclonal
Immunogen:	Peptide with sequence C-IVMAPSSQSQPSGS, from the C Terminus of the protein sequence according to NP_001871.2.
Formulation:	Supplied at 0.5 mg/ml in Tris saline, 0.02% sodium azide, pH7.3 with 0.5% bovine serum albumin.
Concentration:	lot specific
Purification:	Purified from goat serum by ammonium sulphate precipitation followed by antigen affinity chromatography using the immunizing peptide. Supplied at 0.5 mg/ml in Tris saline, 0.02% sodium azide, pH7.3 with 0.5% bovine serum albumin. Aliquot and store at -20°C. Minimize freezing and thawing.
Conjugation:	Unconjugated
Storage:	Store at -20°C as received.
Stability:	Stable for 12 months from date of receipt.
Gene Name:	activating transcription factor 2
Database Link:	NP_001871 Entrez Gene 81647 Rat Entrez Gene 478806 Dog Entrez Gene 1386 Human P15336



[View online »](#)

Background:

This gene encodes a transcription factor that is a member of the leucine zipper family of DNA binding proteins. This protein binds to the cAMP-responsive element (CRE), an octameric palindrome. The protein forms a homodimer or heterodimer with c-Jun and stimulates CRE-dependent transcription. The protein is also a histone acetyltransferase (HAT) that specifically acetylates histones H2B and H4 in vitro; thus it may represent a class of sequence-specific factors that activate transcription by direct effects on chromatin components. Additional transcript variants have been identified but their biological validity has not been determined. [provided by RefSeq]

Synonyms:

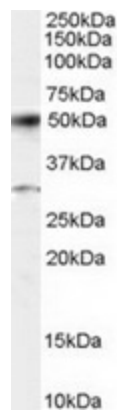
CRE-BP1; CREB-2; CREB2; HB16; TREB7

Protein Families:

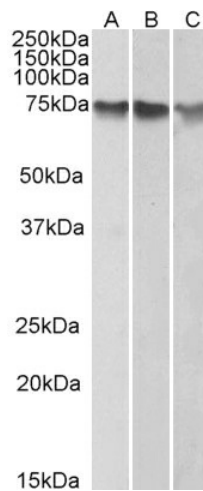
Druggable Genome, Transcription Factors

Protein Pathways:

MAPK signaling pathway

Product images:


TA302732 staining (0.5ug/ml) of Human Placenta lysate (RIPA buffer, 35ug total protein per lane). Primary incubated for 12 hour. Detected by western blot using chemiluminescence.



TA302732 (1ug/ml) staining of HepG2 (A), K562 (B) and HeLa (C) nuclear lysates (35ug protein in RIPA buffer). Primary incubation was 1 hour. Detected by chemiluminescence.