

Product datasheet for **TA302729**

DOCK1 Goat Polyclonal Antibody

Product data:

Product Type:	Primary Antibodies
Applications:	WB
Recommended Dilution:	WB: 3-4µg/ml.
Reactivity:	Human (Expected from sequence similarity: Mouse, Rat, Dog, Pig, Cow)
Host:	Goat
Isotype:	IgG
Clonality:	Polyclonal
Immunogen:	Peptide with sequence C-TTRKQTSVDSGIVQ, from the C Terminus of the protein sequence according to NP_001371.
Formulation:	Supplied at 0.5 mg/ml in Tris saline, 0.02% sodium azide, pH7.3 with 0.5% bovine serum albumin.
Concentration:	lot specific
Purification:	Purified from goat serum by ammonium sulphate precipitation followed by antigen affinity chromatography using the immunizing peptide. Supplied at 0.5 mg/ml in Tris saline, 0.02% sodium azide, pH7.3 with 0.5% bovine serum albumin. Aliquot and store at -20°C. Minimize freezing and thawing.
Conjugation:	Unconjugated
Storage:	Store at -20°C as received.
Stability:	Stable for 12 months from date of receipt.
Gene Name:	dedicator of cytokinesis 1
Database Link:	NP_001371 Entrez Gene 309081 RatEntrez Gene 330662 MouseEntrez Gene 486934 DogEntrez Gene 1793 Human Q14185
Background:	This gene product binds to the SH3 domain of CRK protein. It may regulate cell surface extension and may have a role in the cell surface extension of an engulfing cell around a dying cell during apoptosis. [provided by RefSeq]
Synonyms:	ced5; DOCK180

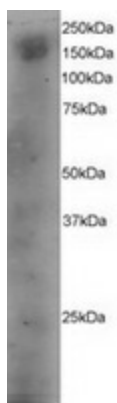


[View online »](#)

Protein Families: Druggable Genome

Protein Pathways: Focal adhesion, Regulation of actin cytoskeleton

Product images:



TA302729 staining (4ug/ml) of A431 lysate (RIPA buffer, 35ug total protein per lane). Primary incubated for 12 hour. Detected by western blot using chemiluminescence.