

## Product datasheet for **TA302726**

### Bif (SH3GLB1) Goat Polyclonal Antibody

#### Product data:

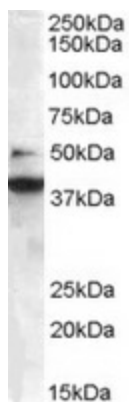
Product Type:	Primary Antibodies
Applications:	WB
Recommended Dilution:	ELISA: 1:32,000. WB: 0.3-1.0 µg/ml.
Reactivity:	Human (Expected from sequence similarity: Mouse, Rat, Dog, Cow)
Host:	Goat
Isotype:	IgG
Clonality:	Polyclonal
Immunogen:	Peptide with sequence C-QKGGKVPITYLELLN, from the C Terminus of the protein sequence according to NP_057093.1.
Formulation:	Supplied at 0.5 mg/ml in Tris saline, 0.02% sodium azide, pH7.3 with 0.5% bovine serum albumin.
Concentration:	lot specific
Purification:	Purified from goat serum by ammonium sulphate precipitation followed by antigen affinity chromatography using the immunizing peptide. Supplied at 0.5 mg/ml in Tris saline, 0.02% sodium azide, pH7.3 with 0.5% bovine serum albumin. Aliquot and store at -20°C. Minimize freezing and thawing.
Conjugation:	Unconjugated
Storage:	Store at -20°C as received.
Stability:	Stable for 12 months from date of receipt.
Gene Name:	SH3 domain containing GRB2 like endophilin B1
Database Link:	<a href="#">NP_057093</a> <a href="#">Entrez Gene 54673 Mouse</a> <a href="#">Entrez Gene 292156 Rat</a> <a href="#">Entrez Gene 612505 Dog</a> <a href="#">Entrez Gene 51100 Human</a> <a href="#">Q9Y371</a>
Background:	May be required for normal outer mitochondrial membrane dynamics. Required for coatomer-mediated retrograde transport in certain cells. May recruit other proteins to membranes with high curvature. May promote membrane fusion.
Synonyms:	Bif-1; CGI-61; dj612B15.2; PPP1R70



[View online »](#)

Protein Pathways: Endocytosis

### Product images:



TA302726 staining (0.3ug/ml) of Jurkat lysate (RIPA buffer, 35ug total protein per lane). Primary incubated for 1 hour. Detected by western blot using chemiluminescence.