

Product datasheet for **TA302725**

FYN Goat Polyclonal Antibody

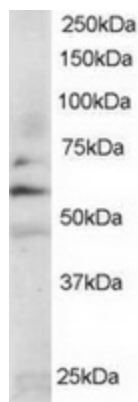
Product data:

Product Type:	Primary Antibodies
Applications:	WB
Recommended Dilution:	ELISA: 1:32,000. WB: 0.2-1 µg/ml.
Reactivity:	Human, Mouse (Expected from sequence similarity: Rat, Dog, Pig, Cow)
Host:	Goat
Isotype:	IgG
Clonality:	Polyclonal
Immunogen:	Peptide with sequence VQCKDKEATKLTE, from the N Terminus of the protein sequence according to NP_002028.1; NP_694592.1; NP_694593.1.
Formulation:	Supplied at 0.5 mg/ml in Tris saline, 0.02% sodium azide, pH7.3 with 0.5% bovine serum albumin.
Concentration:	lot specific
Purification:	Purified from goat serum by ammonium sulphate precipitation followed by antigen affinity chromatography using the immunizing peptide. Supplied at 0.5 mg/ml in Tris saline, 0.02% sodium azide, pH7.3 with 0.5% bovine serum albumin. Aliquot and store at -20°C. Minimize freezing and thawing.
Conjugation:	Unconjugated
Storage:	Store at -20°C as received.
Stability:	Stable for 12 months from date of receipt.
Gene Name:	FYN proto-oncogene, Src family tyrosine kinase
Database Link:	NP_002028 Entrez Gene 14360 MouseEntrez Gene 25150 RatEntrez Gene 475032 DogEntrez Gene 2534 Human P06241



[View online »](#)

Background:	This gene is a member of the protein-tyrosine kinase oncogene family. It encodes a membrane-associated tyrosine kinase that has been implicated in the control of cell growth. The protein associates with the p85 subunit of phosphatidylinositol 3-kinase and interacts with the fyn-binding protein. Alternatively spliced transcript variants encoding distinct isoforms exist. [provided by RefSeq]
Synonyms:	p59-FYN; SLK; SYN
Protein Families:	Druggable Genome, Protein Kinase
Protein Pathways:	Adherens junction, Axon guidance, Fc epsilon RI signaling pathway, Focal adhesion, Natural killer cell mediated cytotoxicity, Pathogenic Escherichia coli infection, Prion diseases, T cell receptor signaling pathway, Viral myocarditis

Product images:

TA302725 staining 0.2ug/ml of Jurkat lysate (RIPA buffer, 35ug total protein per lane). Primary incubated for 1 hour. Detected by western blot using chemiluminescence.