

## Product datasheet for **TA302723**

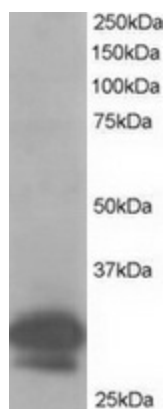
### CAPZB Goat Polyclonal Antibody

#### Product data:

Product Type:	Primary Antibodies
Applications:	WB
Recommended Dilution:	ELISA: 1/32,000. WB 0.5-2µg/ml.
Reactivity:	Human, Rat (Expected from sequence similarity: Mouse, Dog, Pig, Cow)
Host:	Goat
Isotype:	IgG
Clonality:	Polyclonal
Immunogen:	Peptide with sequence NDLVEALKRKQQC, from the C Terminus of the protein sequence according to NP_004921.
Formulation:	Supplied at 0.5 mg/ml in Tris saline, 0.02% sodium azide, pH7.3 with 0.5% bovine serum albumin.
Concentration:	lot specific
Purification:	Purified from goat serum by ammonium sulphate precipitation followed by antigen affinity chromatography using the immunizing peptide. Supplied at 0.5 mg/ml in Tris saline, 0.02% sodium azide, pH7.3 with 0.5% bovine serum albumin. Aliquot and store at -20°C. Minimize freezing and thawing.
Conjugation:	Unconjugated
Storage:	Store at -20°C as received.
Stability:	Stable for 12 months from date of receipt.
Gene Name:	capping actin protein of muscle Z-line beta subunit
Database Link:	<a href="#">NP_004921</a> <a href="#">Entrez Gene 12345 MouseEntrez Gene 298584 RatEntrez Gene 478209 DogEntrez Gene 832 Human P47756</a>
Background:	CAPZB is a member of the F-actin capping protein family. This gene encodes the beta subunit of the barbed-end actin binding protein. The protein regulates growth of the actin filament by capping the barbed end of growing actin filaments.
Synonyms:	CAPB; CAPPB; CAPZ



[View online »](#)

**Product images:**

TA302723 staining (1ug/ml) of Hela lysate (RIPA buffer, 35ug total protein per lane). Primary incubated for 1 hour. Detected by western blot using chemiluminescence.