

Product datasheet for **TA302722**

MCT2 (SLC16A7) Goat Polyclonal Antibody

Product data:

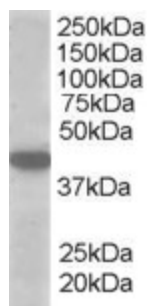
Product Type:	Primary Antibodies
Applications:	WB
Recommended Dilution:	ELISA: 1:128,000. WB: 1-3µg/ml.
Reactivity:	Human
Host:	Goat
Isotype:	IgG
Clonality:	Polyclonal
Immunogen:	Peptide with sequence C-SNAQSVTSETNI, from the C Terminus of the protein sequence according to NP_004722.
Formulation:	Supplied at 0.5 mg/ml in Tris saline, 0.02% sodium azide, pH7.3 with 0.5% bovine serum albumin.
Concentration:	lot specific
Purification:	Purified from goat serum by ammonium sulphate precipitation followed by antigen affinity chromatography using the immunizing peptide. Supplied at 0.5 mg/ml in Tris saline, 0.02% sodium azide, pH7.3 with 0.5% bovine serum albumin. Aliquot and store at -20°C. Minimize freezing and thawing.
Conjugation:	Unconjugated
Storage:	Store at -20°C as received.
Stability:	Stable for 12 months from date of receipt.
Gene Name:	solute carrier family 16 member 7
Database Link:	NP_004722 Entrez Gene 9194 Human O60669
Background:	Proton-linked monocarboxylate transporter. Catalyzes the rapid transport across the plasma membrane of many monocarboxylates such as lactate, pyruvate, branched-chain oxo acids derived from leucine, valine and isoleucine, and the ketone bodies acetoacetate, beta-hydroxybutyrate and acetate. MCT2 is a high affinity pyruvate transporter
Synonyms:	MCT2



[View online »](#)

Protein Families: Transmembrane

Product images:



TA302722 (1ug/ml) staining of A549 lysate (35ug protein in RIPA buffer). Primary incubation was 1 hour. Detected by chemiluminescence.