

Product datasheet for **TA302719**

ITK Goat Polyclonal Antibody

Product data:

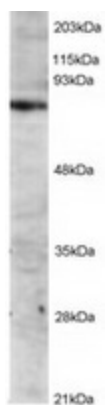
| | |
|-----------------------|--|
| Product Type: | Primary Antibodies |
| Applications: | WB |
| Recommended Dilution: | WB: 0.5-2 µg/ml. |
| Reactivity: | Human (Expected from sequence similarity: Mouse) |
| Host: | Goat |
| Isotype: | IgG |
| Clonality: | Polyclonal |
| Immunogen: | Peptide with sequence C-RLLRQLAEIAESGL, from the C Terminus of the protein sequence according to NP_005537. |
| Formulation: | Supplied at 0.5 mg/ml in Tris saline, 0.02% sodium azide, pH7.3 with 0.5% bovine serum albumin. |
| Concentration: | lot specific |
| Purification: | Purified from goat serum by ammonium sulphate precipitation followed by antigen affinity chromatography using the immunizing peptide. Supplied at 0.5 mg/ml in Tris saline, 0.02% sodium azide, pH7.3 with 0.5% bovine serum albumin. Aliquot and store at -20°C. Minimize freezing and thawing. |
| Conjugation: | Unconjugated |
| Storage: | Store at -20°C as received. |
| Stability: | Stable for 12 months from date of receipt. |
| Gene Name: | IL2 inducible T-cell kinase |
| Database Link: | NP_005537 Entrez Gene 16428 Mouse Entrez Gene 3702 Human Q08881 |
| Background: | This gene encodes an intracellular tyrosine kinase expressed in T-cells. The protein contains both SH2 and SH3 domains which are often found in intracellular kinases. It is thought to play a role in T-cell proliferation and differentiation. [provided by RefSeq] |
| Synonyms: | EMT; LPFS1; LYK; PSCTK2 |
| Protein Families: | Druggable Genome, Protein Kinase |



[View online »](#)

Protein Pathways: Chemokine signaling pathway, Leukocyte transendothelial migration, T cell receptor signaling pathway

Product images:



TA302719 staining (2ug/ml) of Jurkat lysate (RIPA buffer, 1.4E+05 cells per lane). Primary incubated for 12 hour. Detected by western blot using chemiluminescence.