

Product datasheet for **TA302718**

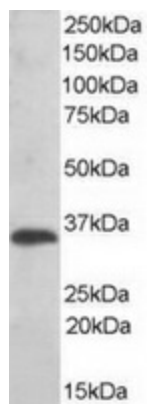
TXNDC (TMX1) Goat Polyclonal Antibody

Product data:

Product Type:	Primary Antibodies
Applications:	WB
Recommended Dilution:	ELISA: 1:64,000. WB: 0.01-0.03µg/ml.
Reactivity:	Human
Host:	Goat
Isotype:	IgG
Clonality:	Polyclonal
Immunogen:	Peptide with sequence C-RSLGPSLATDKS, from the C Terminus of the protein sequence according to NP_110382.
Formulation:	Supplied at 0.5 mg/ml in Tris saline, 0.02% sodium azide, pH7.3 with 0.5% bovine serum albumin.
Concentration:	lot specific
Purification:	Purified from goat serum by ammonium sulphate precipitation followed by antigen affinity chromatography using the immunizing peptide. Supplied at 0.5 mg/ml in Tris saline, 0.02% sodium azide, pH7.3 with 0.5% bovine serum albumin. Aliquot and store at -20°C. Minimize freezing and thawing.
Conjugation:	Unconjugated
Storage:	Store at -20°C as received.
Stability:	Stable for 12 months from date of receipt.
Gene Name:	thioredoxin related transmembrane protein 1
Database Link:	NP_110382 Entrez Gene 81542 Human Q9H3N1
Background:	TXNDC1 is a thioredoxin (TXN; see MIM 187700)-related protein with disulfide reductase activity (Matsuo et al., 2001 [PubMed 11152479]). [supplied by OMIM]
Synonyms:	PDIA11; TMX; TXNDC; TXNDC1
Protein Families:	Druggable Genome, Transcription Factors, Transmembrane



[View online »](#)

Product images:

TA302718 (0.01ug/ml) staining of human liver lysate (35ug protein in RIPA buffer). Primary incubation was 1 hour. Detected by chemiluminescence.