

Product datasheet for **TA302714**

ORC3L (ORC3) Goat Polyclonal Antibody

Product data:

Product Type:	Primary Antibodies
Applications:	WB
Recommended Dilution:	ELISA: 1:32,000. WB: 1-3µg/ml.
Reactivity:	Human (Expected from sequence similarity: Mouse, Rat, Dog, Cow)
Host:	Goat
Isotype:	IgG
Clonality:	Polyclonal
Immunogen:	Peptide with sequence QKTDHVARLTWGGC, from the C Terminus of the protein sequence according to NP_862820.1; NP_036513.2.
Formulation:	Supplied at 0.5 mg/ml in Tris saline, 0.02% sodium azide, pH7.3 with 0.5% bovine serum albumin.
Concentration:	lot specific
Purification:	Purified from goat serum by ammonium sulphate precipitation followed by antigen affinity chromatography using the immunizing peptide. Supplied at 0.5 mg/ml in Tris saline, 0.02% sodium azide, pH7.3 with 0.5% bovine serum albumin. Aliquot and store at -20°C. Minimize freezing and thawing.
Conjugation:	Unconjugated
Storage:	Store at -20°C as received.
Stability:	Stable for 12 months from date of receipt.
Gene Name:	origin recognition complex subunit 3
Database Link:	NP_036513 Entrez Gene 50793 MouseEntrez Gene 313138 RatEntrez Gene 474991 DogEntrez Gene 23595 Human Q9UBD5



[View online »](#)

Background:

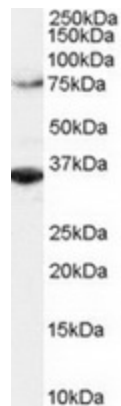
The origin recognition complex (ORC) is a highly conserved six subunits protein complex essential for the initiation of the DNA replication in eukaryotic cells. Studies in yeast demonstrated that ORC binds specifically to origins of replication and serves as a platform for the assembly of additional initiation factors such as Cdc6 and Mcm proteins. The protein encoded by this gene is a subunit of the ORC complex. Studies of a similar gene in *Drosophila* suggested a possible role of this protein in neuronal proliferation and olfactory memory. Alternatively spliced transcript variants encoding distinct isoforms have been reported for this gene. [provided by RefSeq]

Synonyms:

LAT; LATHEO; ORC3L

Protein Pathways:

Cell cycle

Product images:

TA302714 (2ug/ml) staining of Hela lysate (RIPA buffer, 1.4E5 cells per lane). Detected by western blot using chemiluminescence.