

Product datasheet for **TA302707**

DDB1 Goat Polyclonal Antibody

Product data:

| | |
|-----------------------|--|
| Product Type: | Primary Antibodies |
| Applications: | IHC, WB |
| Recommended Dilution: | Western blot: Approx 140kDa band observed in lysates of cell line HeLa, HepG2 and Jurkat (calculated MW of 126.9kDa according to Human NP_001914.3). Recommended concentration: 1-2µg/ml. Approx 140kDa band observed in lysates of cell line NIH3T3 and approx 150kDa band observed in lysates of cell line NSO (calculated MW of 126.8kDa according to Mouse NP_056550.1). Recommended concentration: 0.01-0.03µg/ml. Primary incubation was 1 hour. IHC: 4-6µg/ml. Paraffin embedded Human Brain (Cortex). |
| Reactivity: | Human, Mouse (Expected from sequence similarity: Dog, Cow) |
| Host: | Goat |
| Isotype: | IgG |
| Clonality: | Polyclonal |
| Immunogen: | Peptide with sequence C-DLIKVVEELTRIH, from the C Terminus of the protein sequence according to NP_001914. |
| Formulation: | Supplied at 0.5 mg/ml in Tris saline, 0.02% sodium azide, pH7.3 with 0.5% bovine serum albumin. |
| Concentration: | lot specific |
| Purification: | Purified from goat serum by ammonium sulphate precipitation followed by antigen affinity chromatography using the immunizing peptide. Supplied at 0.5 mg/ml in Tris saline, 0.02% sodium azide, pH7.3 with 0.5% bovine serum albumin. Aliquot and store at -20°C. Minimize freezing and thawing. |
| Conjugation: | Unconjugated |
| Storage: | Store at -20°C as received. |
| Stability: | Stable for 12 months from date of receipt. |
| Gene Name: | damage specific DNA binding protein 1 |



[View online »](#)

Database Link: [NP_001914](#)
[Entrez Gene 13194 Mouse](#)[Entrez Gene 476067 Dog](#)[Entrez Gene 1642 Human](#)
[Q16531](#)

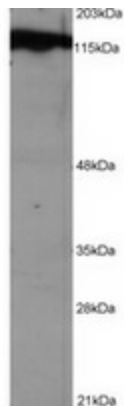
Background: This gene encodes the large subunit of DNA damage-binding protein which is a heterodimer composed of a large and a small subunit. This protein functions in nucleotide-excision repair. Its defective activity causes the repair defect in the patients with xeroderma pigmentosum complementation group E (XPE). However, it remains for mutation analysis to demonstrate whether the defect in XPE patients is in this gene or the gene encoding the small subunit. In addition, Best vitelliform macular dystrophy is mapped to the same region as this gene on 11q, but no sequence alternations of this gene are demonstrated in Best disease patients. [provided by RefSeq]

Synonyms: DDBA; UV-DDB1; XAP1; XPCE; XPE; XPE-BF

Protein Families: Druggable Genome

Protein Pathways: Nucleotide excision repair, Ubiquitin mediated proteolysis

Product images:



TA302707 (0.01ug/ml) staining of NIH3T3 (A) and NSO (B) lysate. (35ug protein in RIPA buffer). Primary incubation was 1 hour. Detected by chemiluminescence.